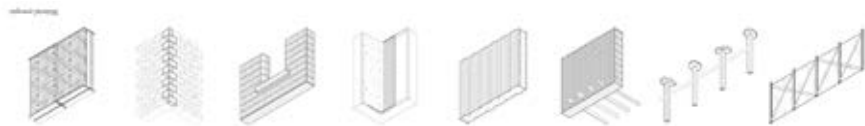
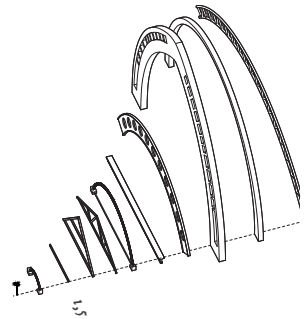
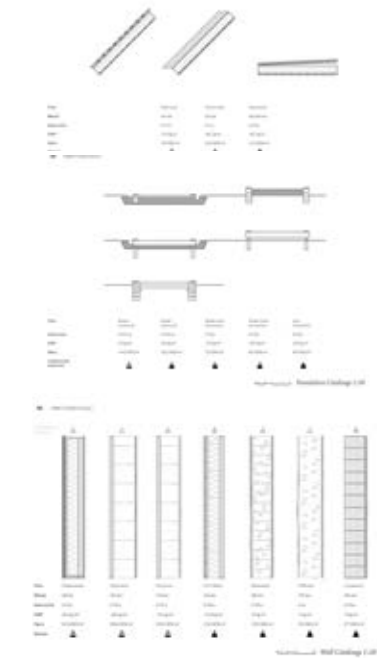
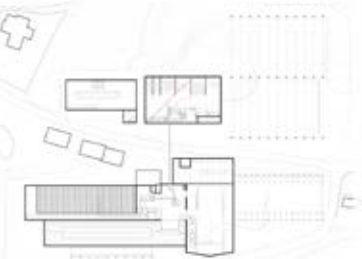


Production process mapping



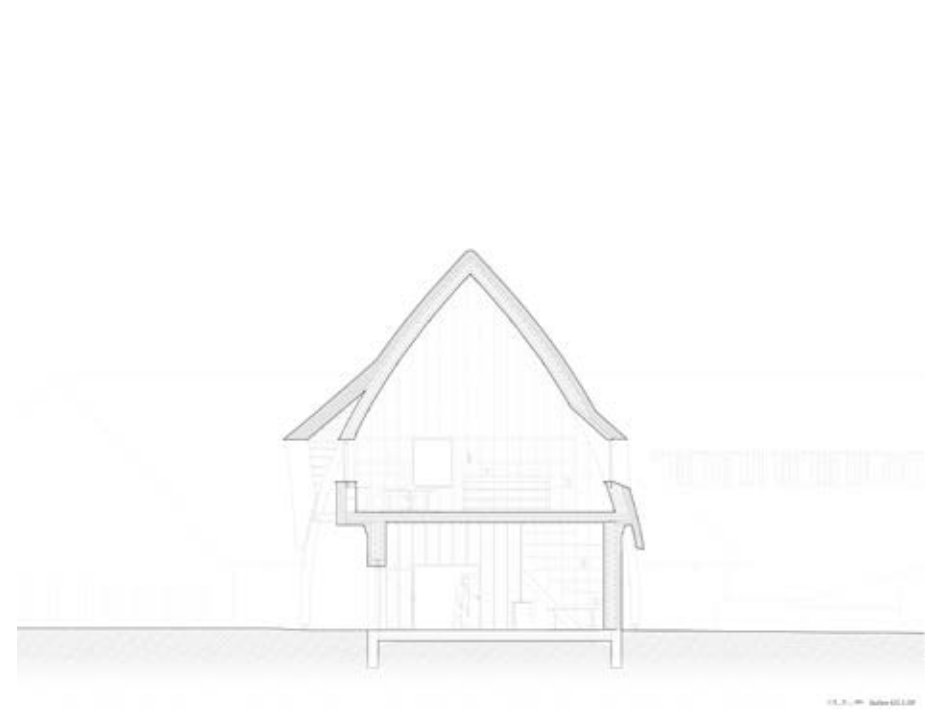
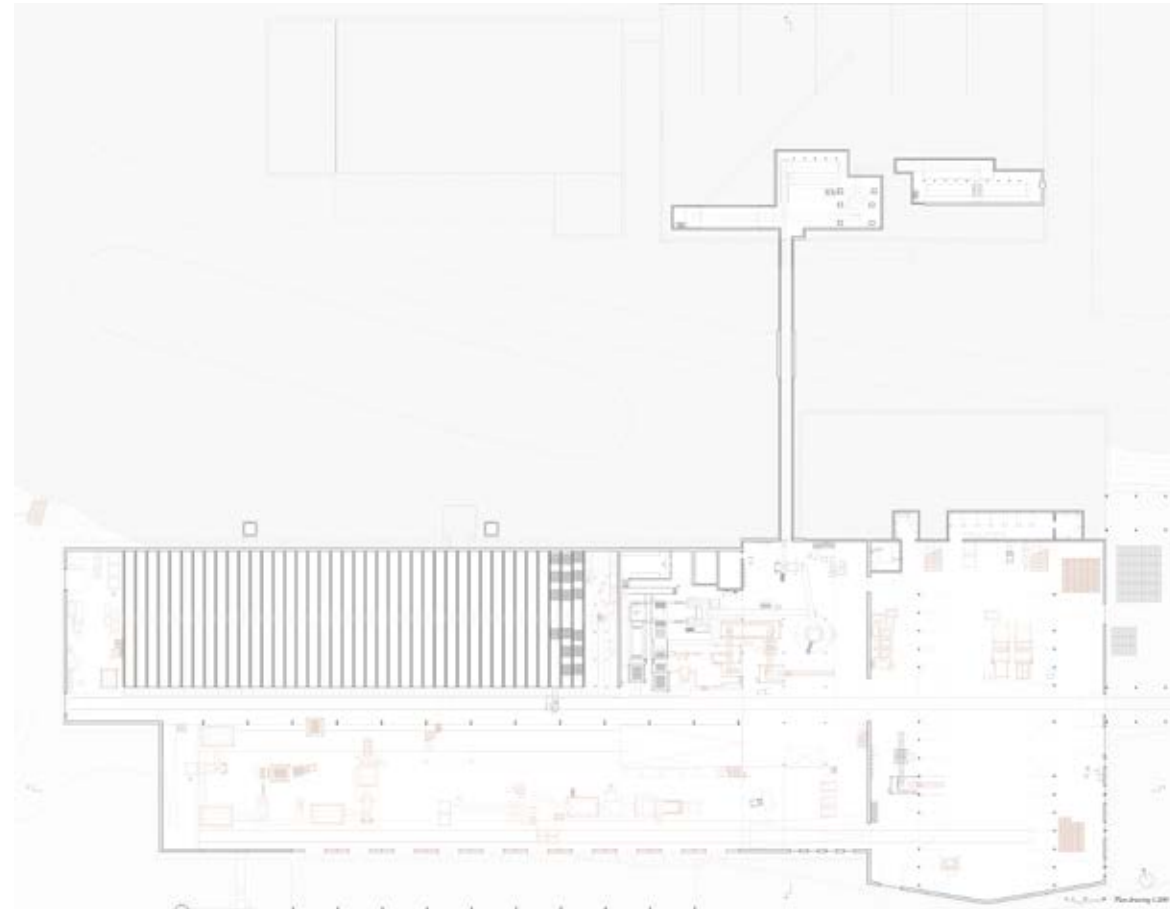
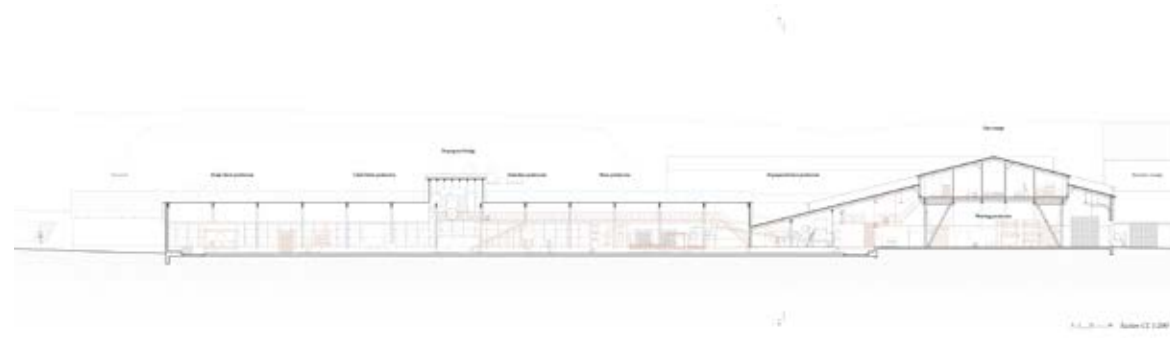
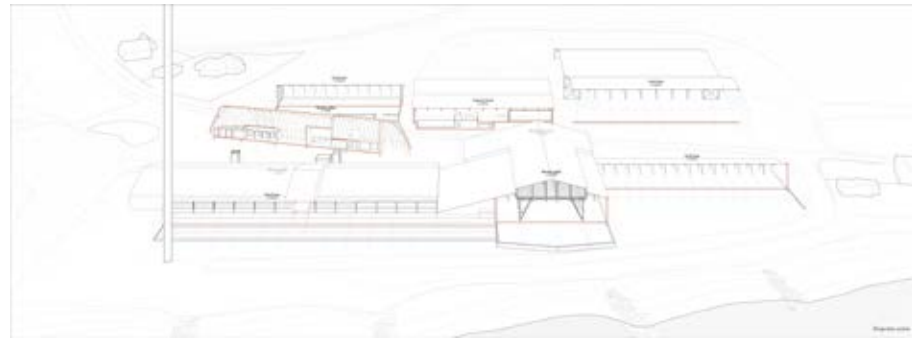
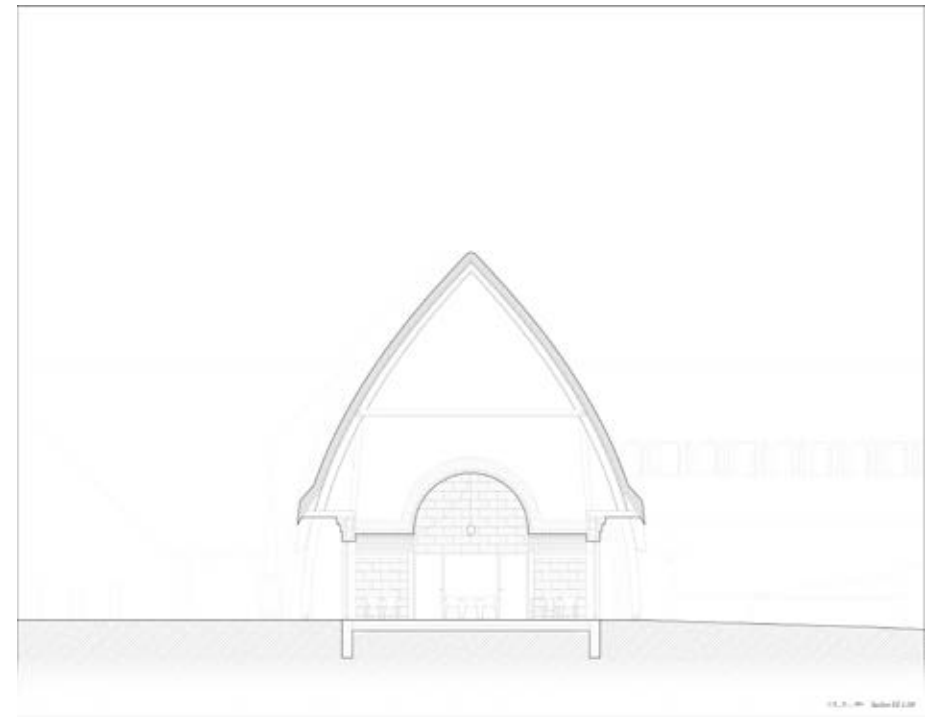
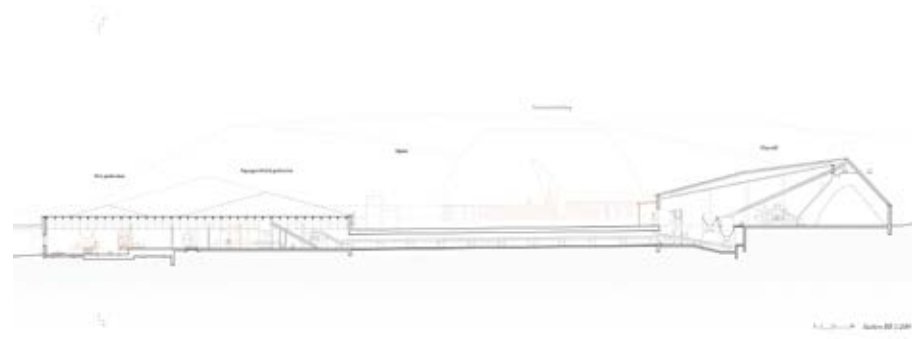
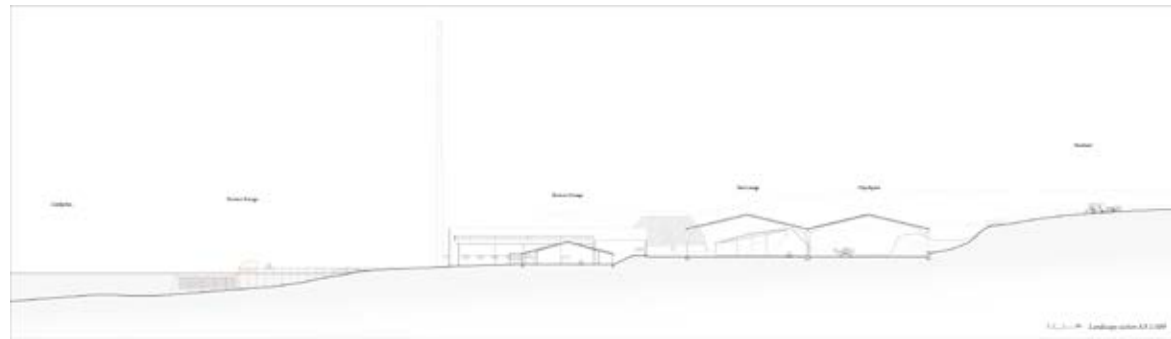
Site development

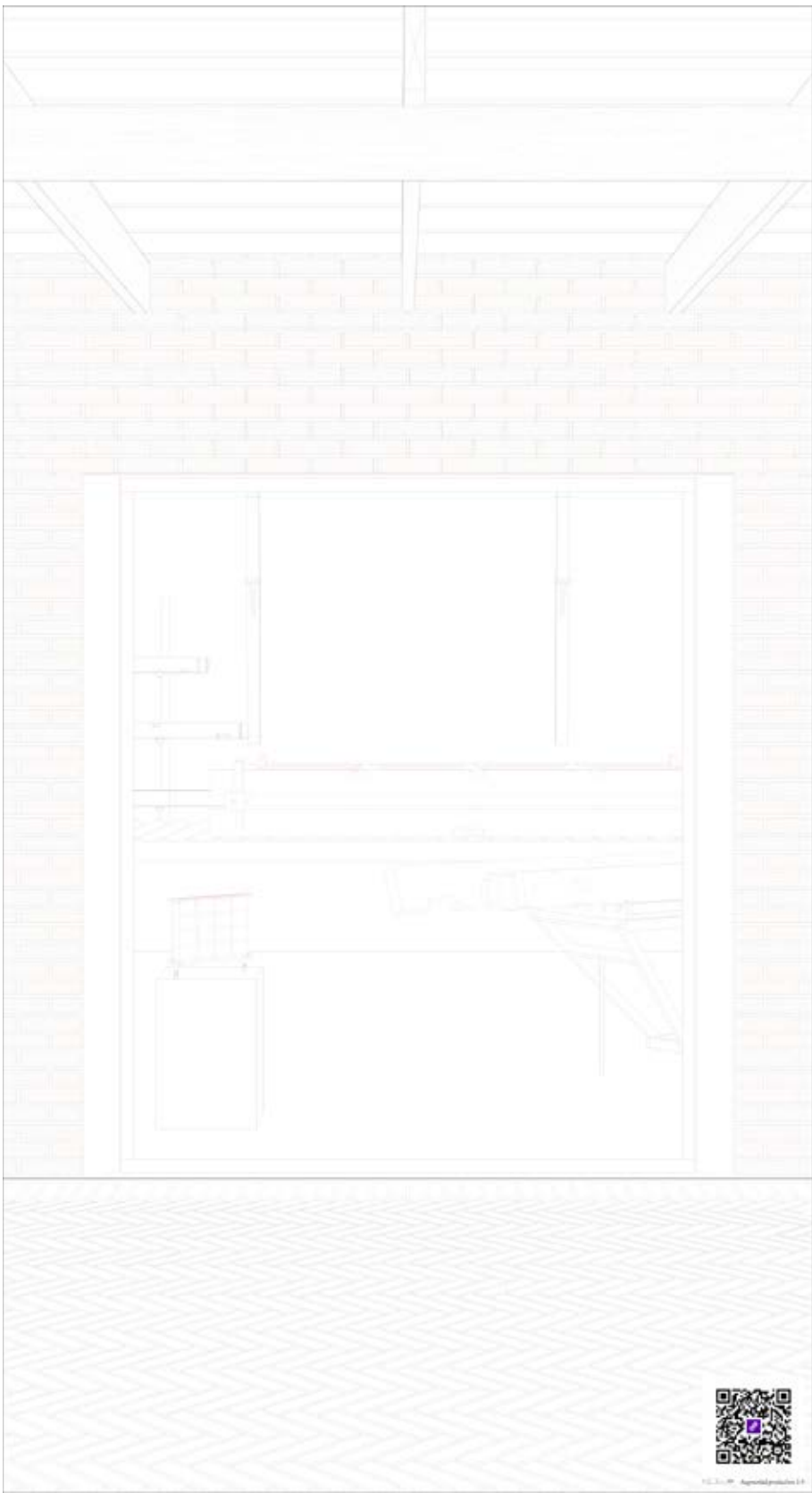
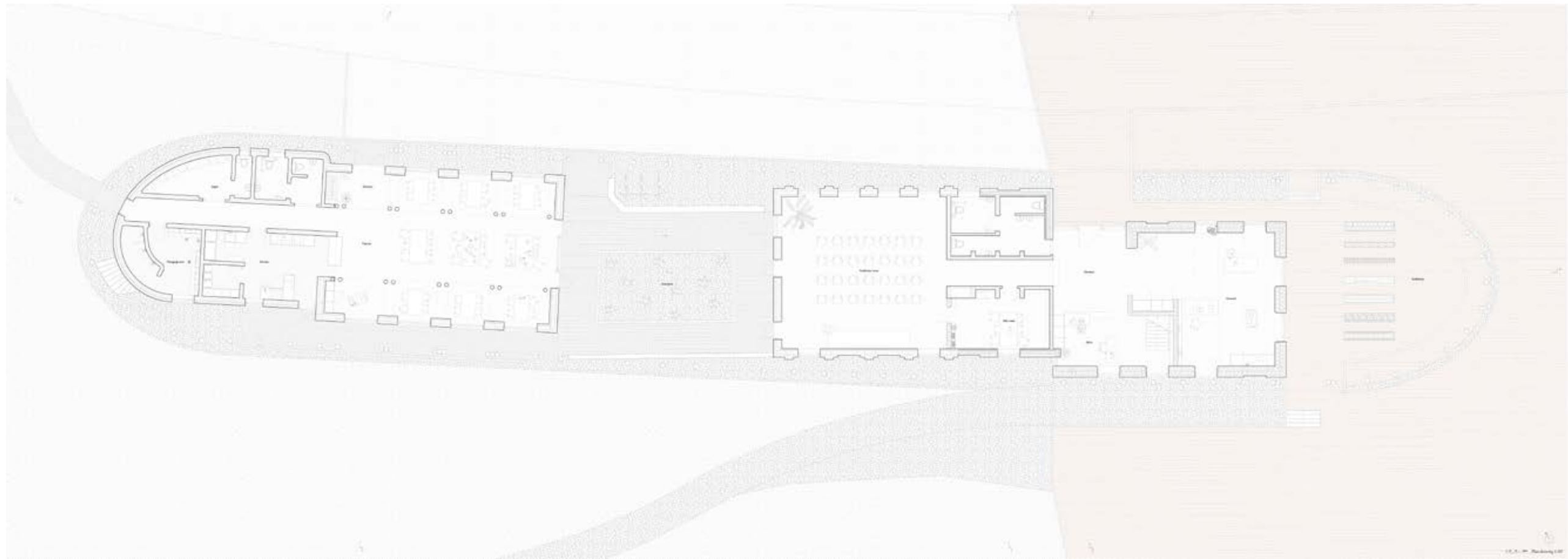
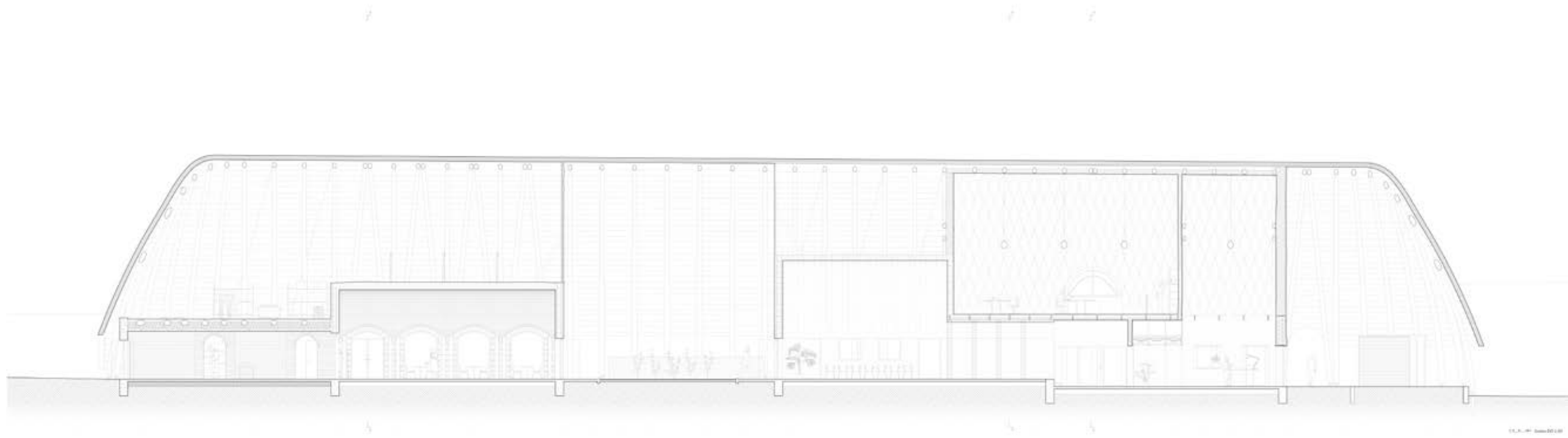


Current production



Proposed production





Drawings

Proposal by
Mikkel Frisbæk Sørensen

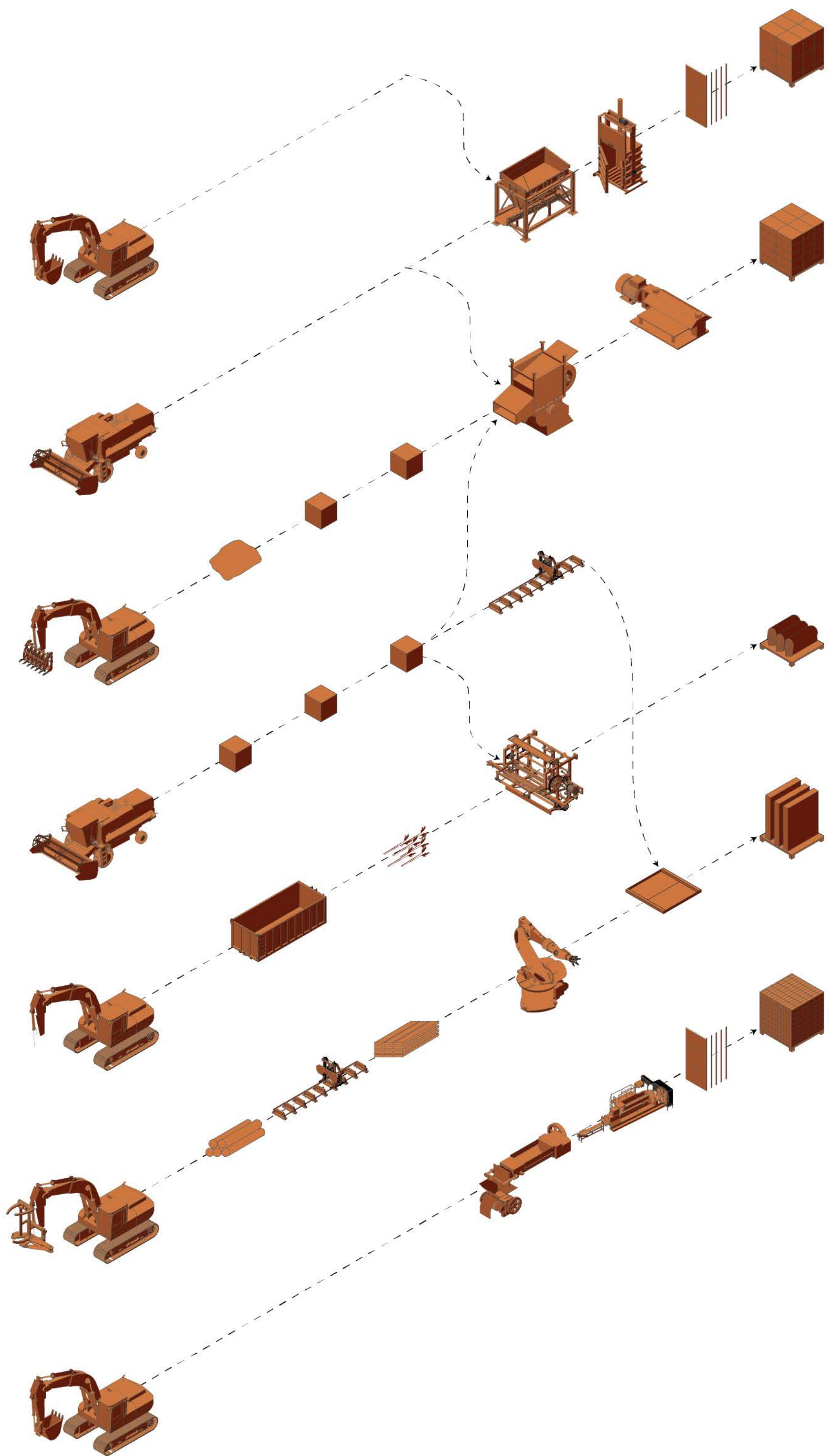
“The Elite Performance”

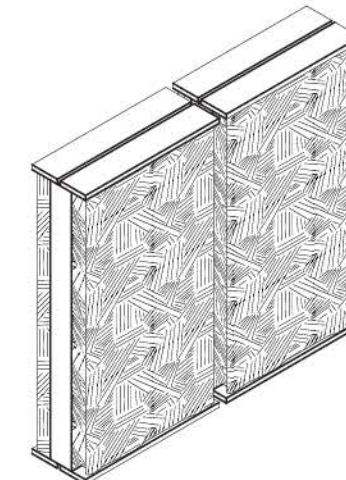
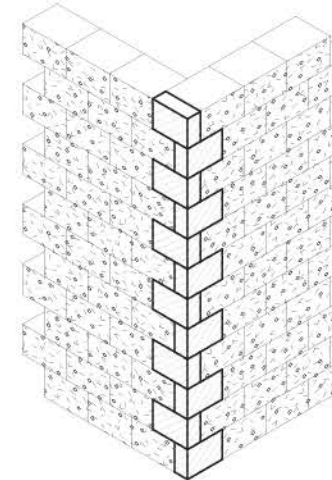
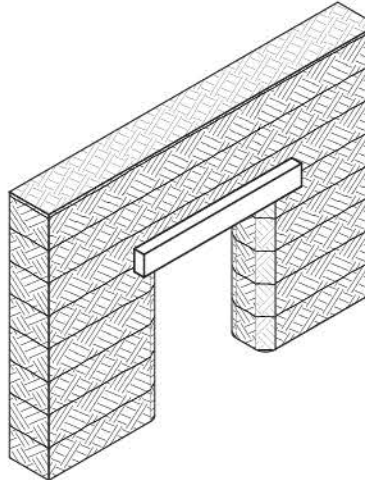
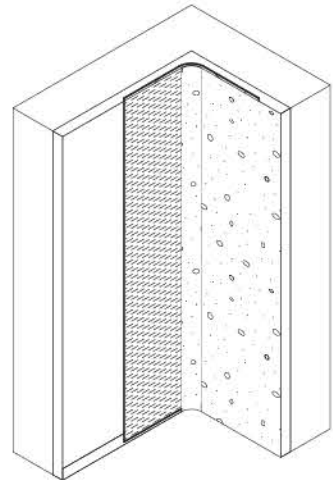
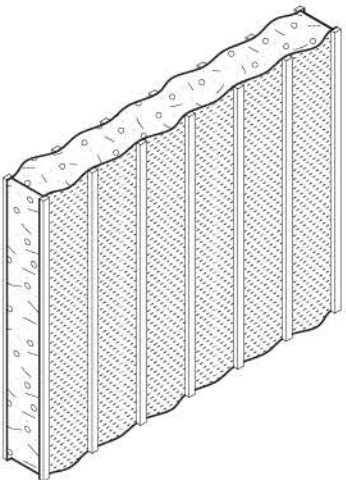
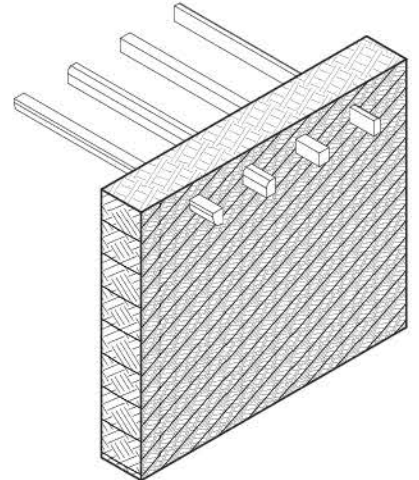
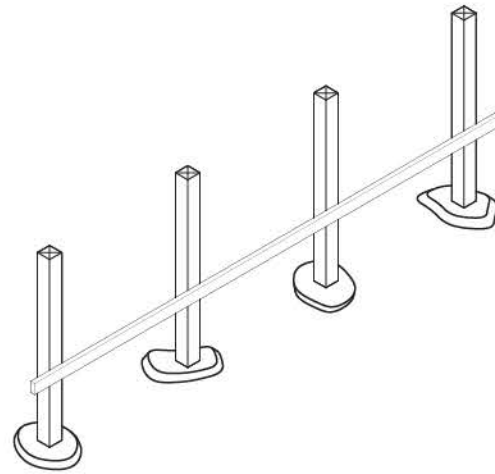
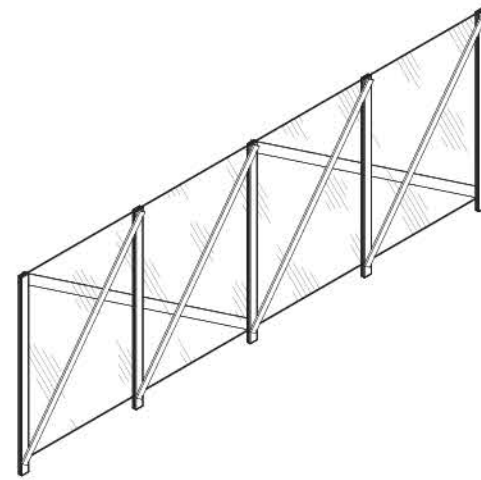
Thesis for
Master of Arts in Architecture RIBA Part II

Aarhus School of Architecture AAA,
Fall of 2022

Supervised by
Dan Ljungar

17 January 2022.





Material synergies



Farmland

Clay hill

Church

Farmland

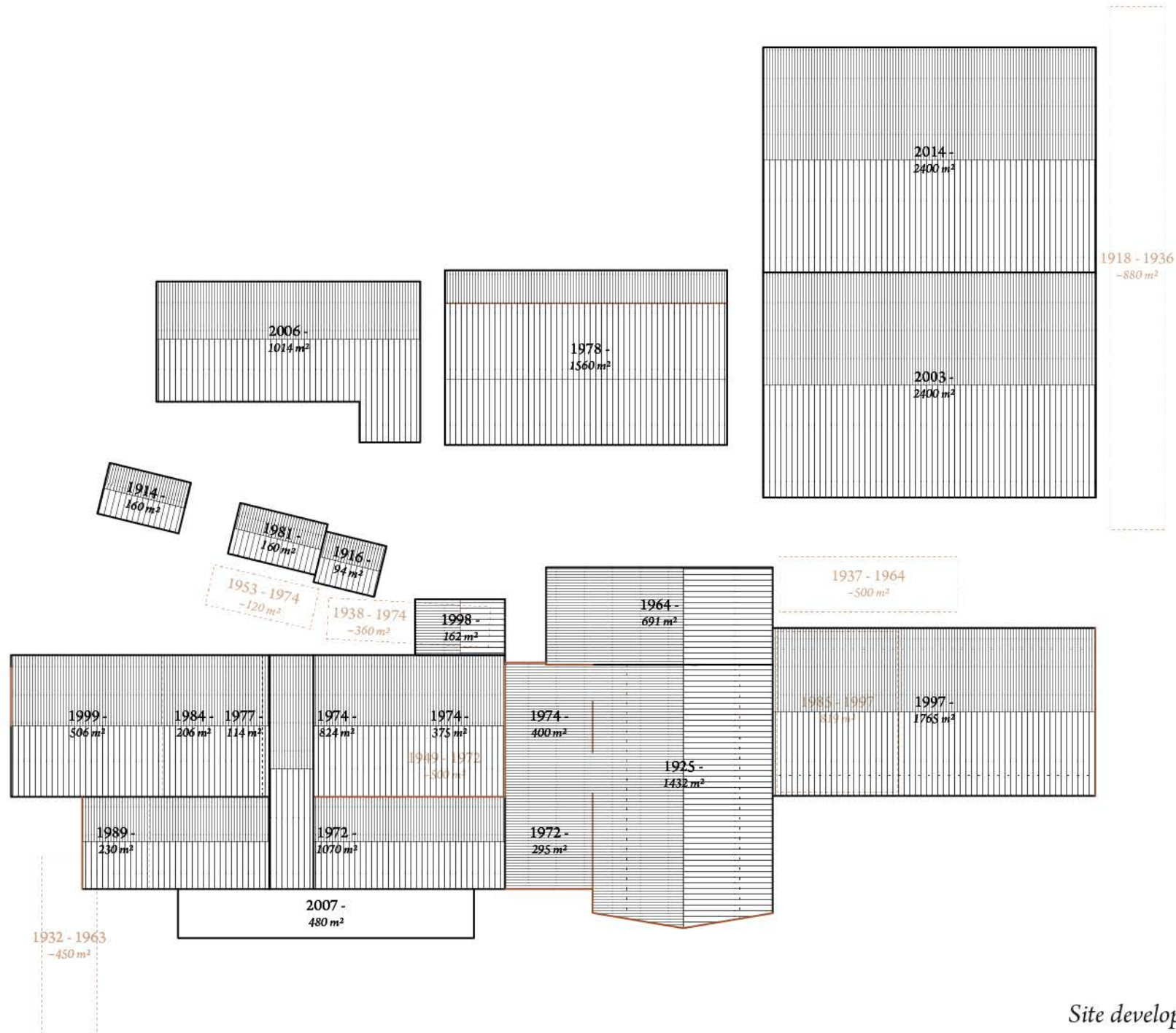
Farmland

Wetlands

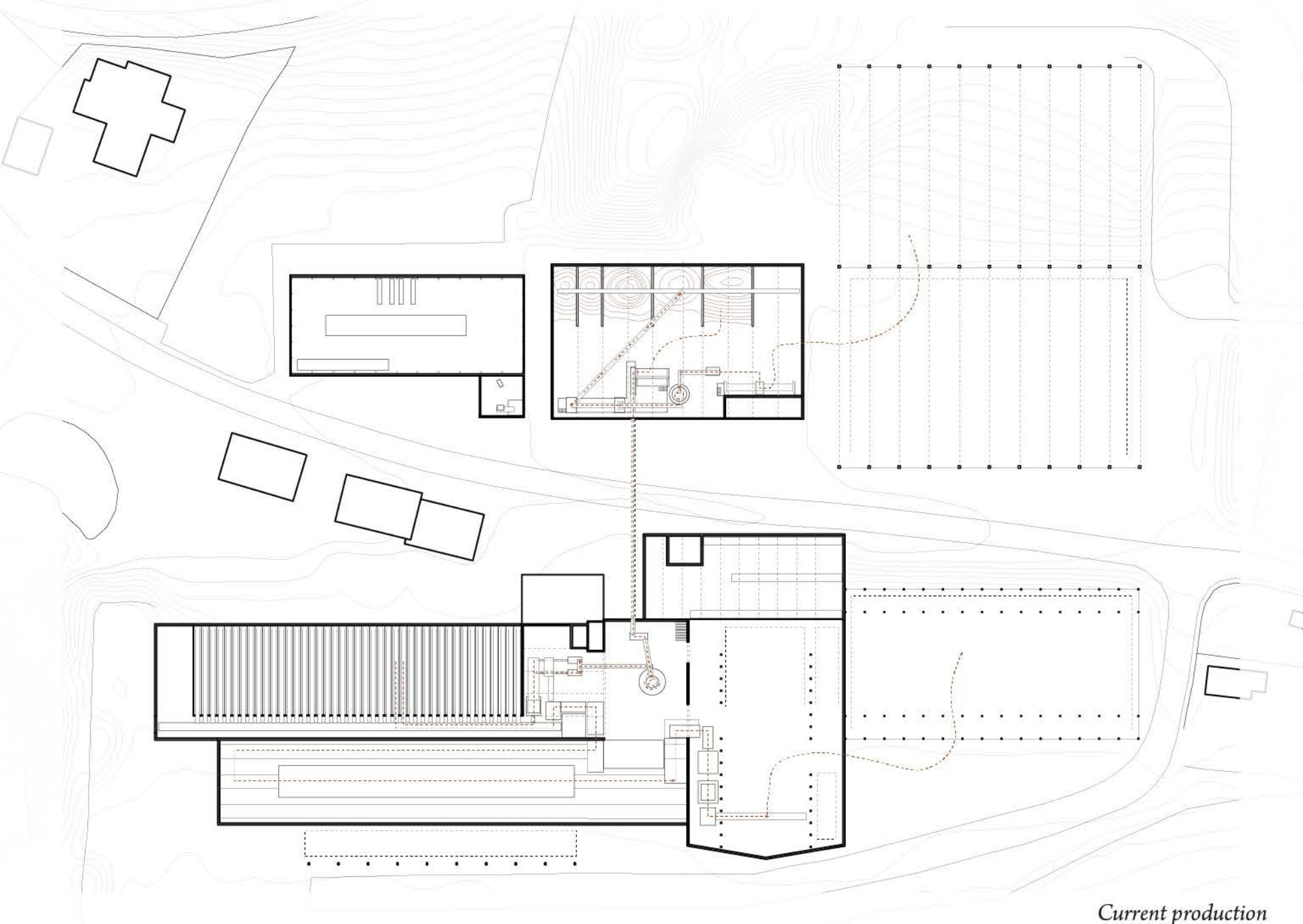
Seaweed cove

0 10 25 50m

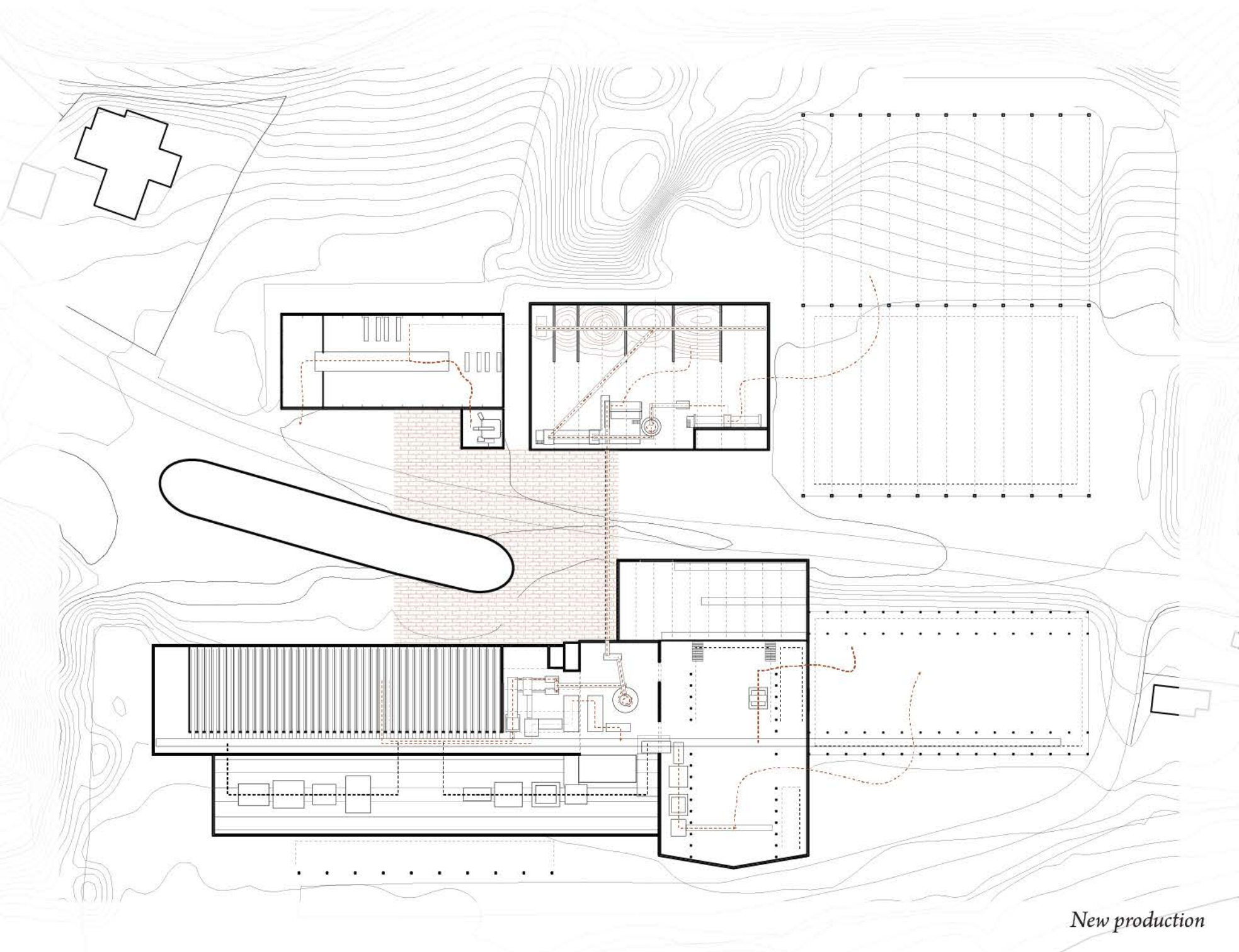
Context plan 1:2000



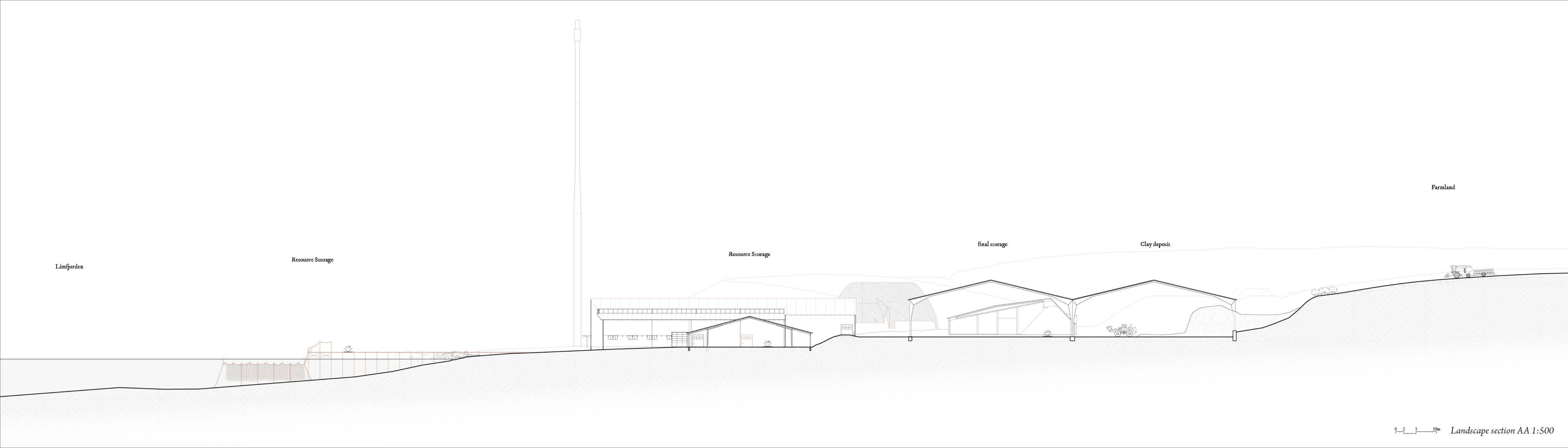
Site development



Current production



New production



Limfjorden

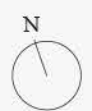
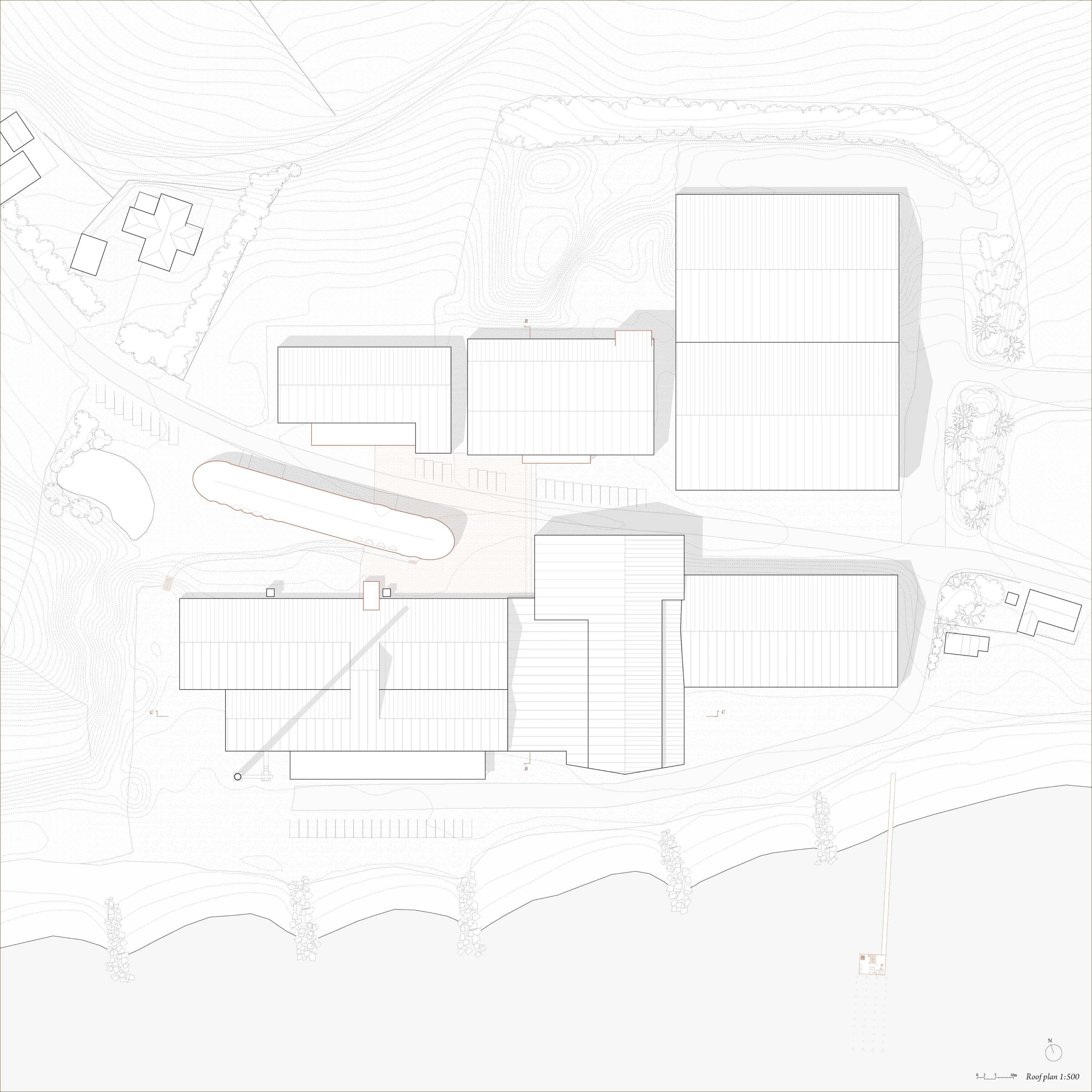
Resource Storage

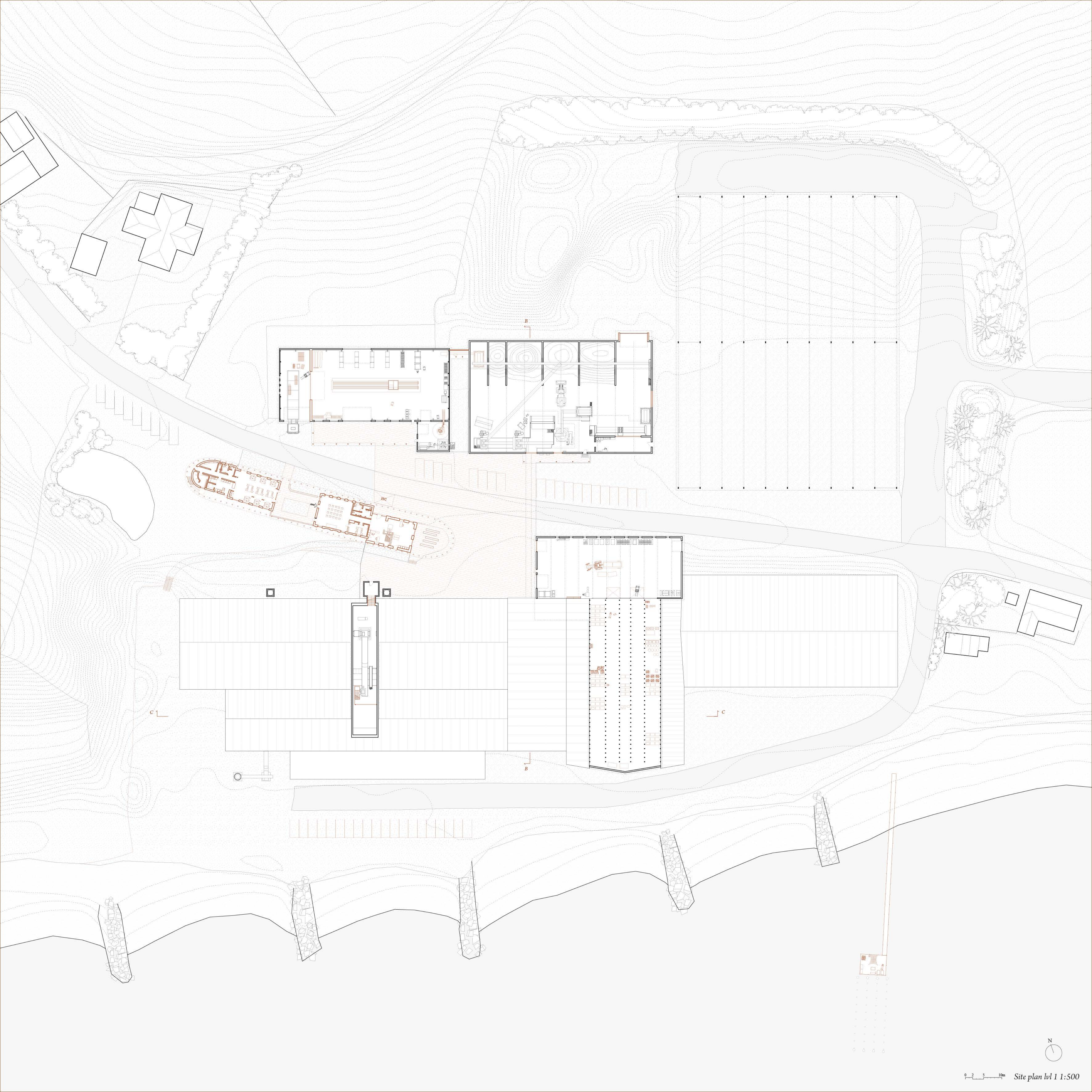
Resource Storage

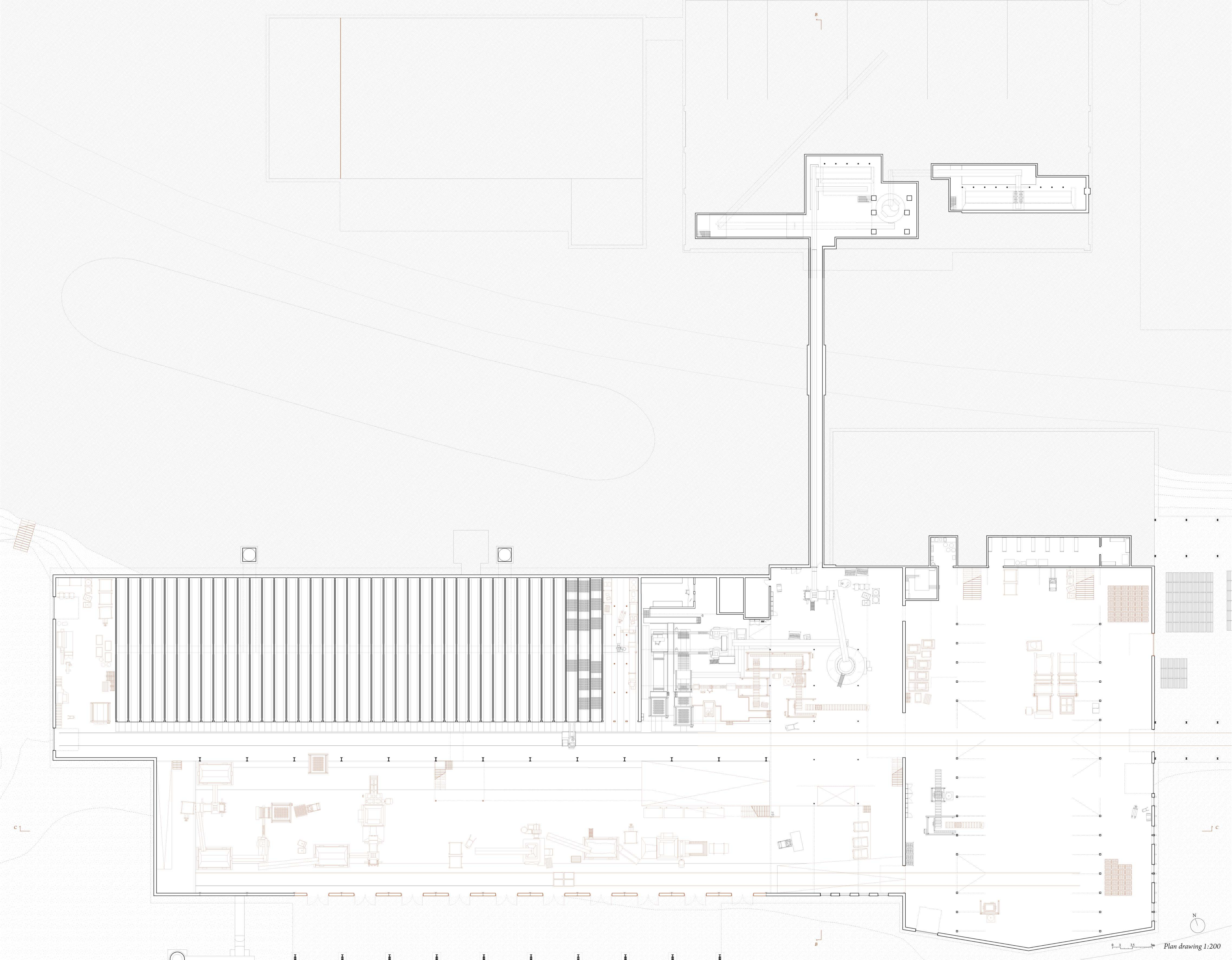
final storage

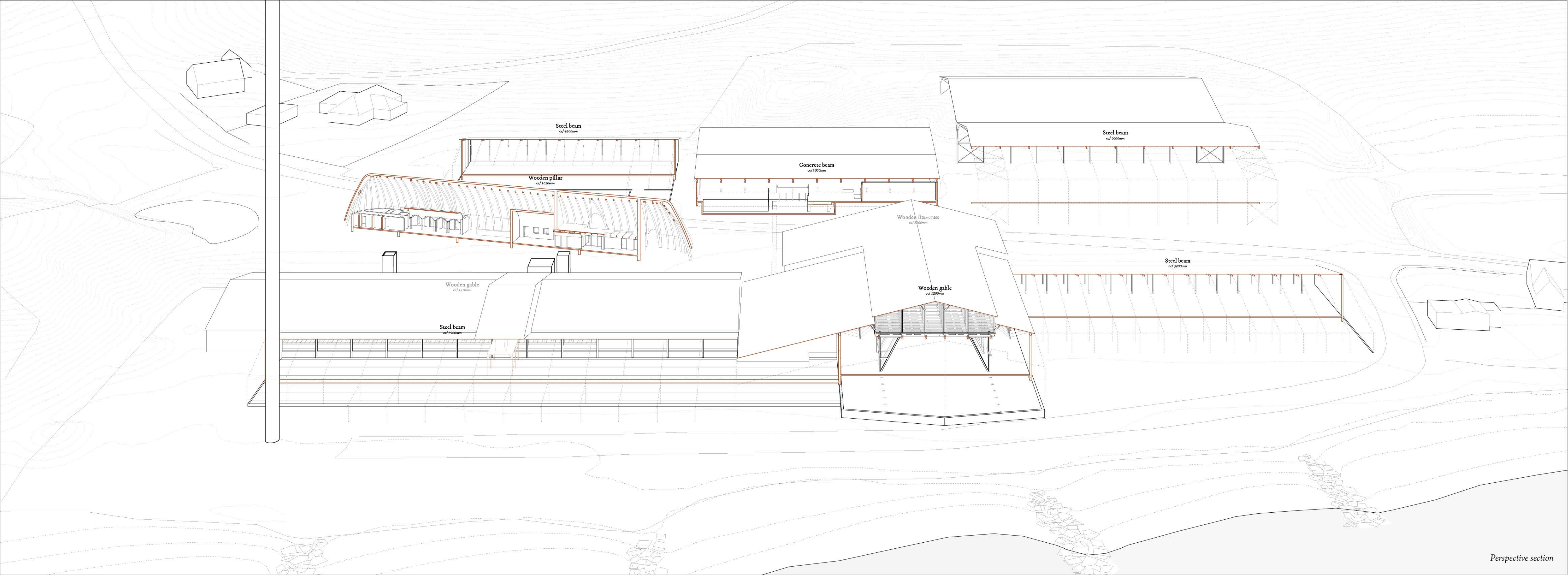
Clay deposit

Farmland









Steel beam
cc/ 4200mm

Wooden pillar
cc/ 1620mm

Concrete beam
cc/ 5000mm

Steel beam
cc/ 6000mm

Wooden flat-truss
cc/ 3800mm

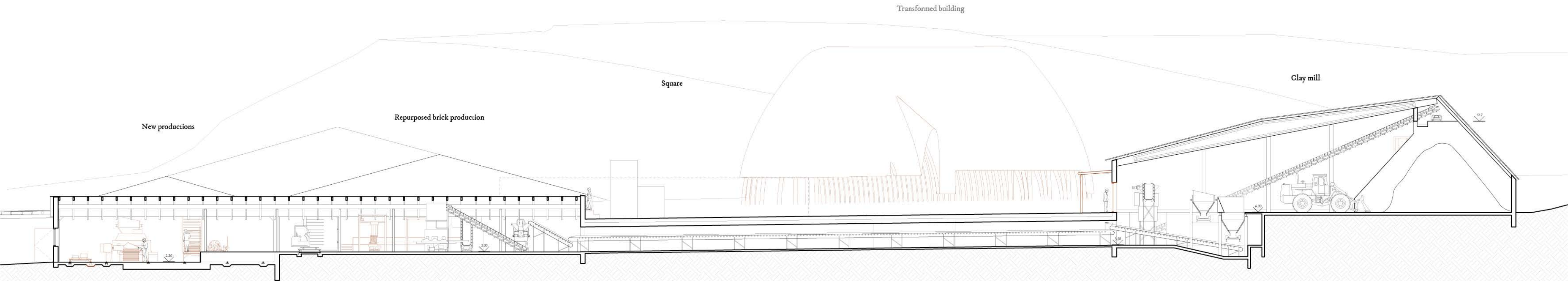
Steel beam
cc/ 39000mm

Wooden gable
cc/ 1520mm

Steel beam
cc/ 5900mm

Wooden gable
cc/ 1200mm

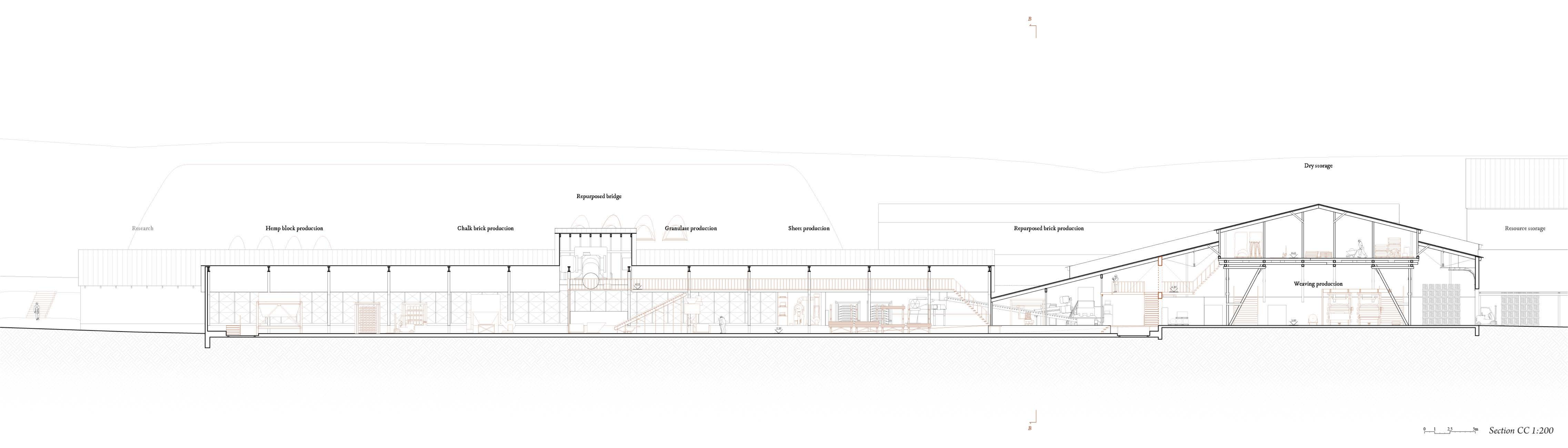
c



c

0 1 2.5 5m

Section BB 1:200



Research

Hemp block production

Chalk brick production

Repurposed bridge

Granulate production

Sheet production

Repurposed brick production

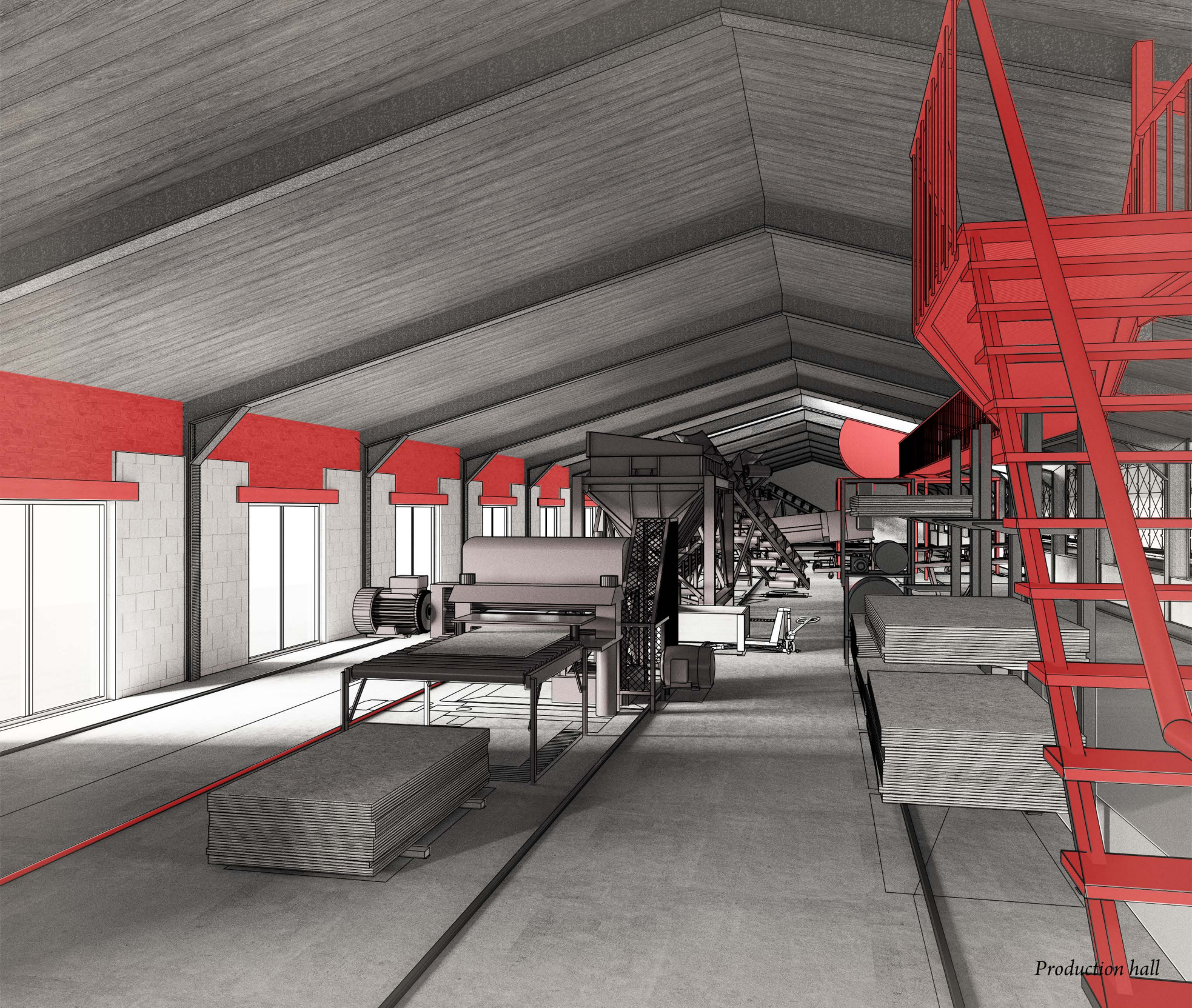
Dry storage

Resource storage

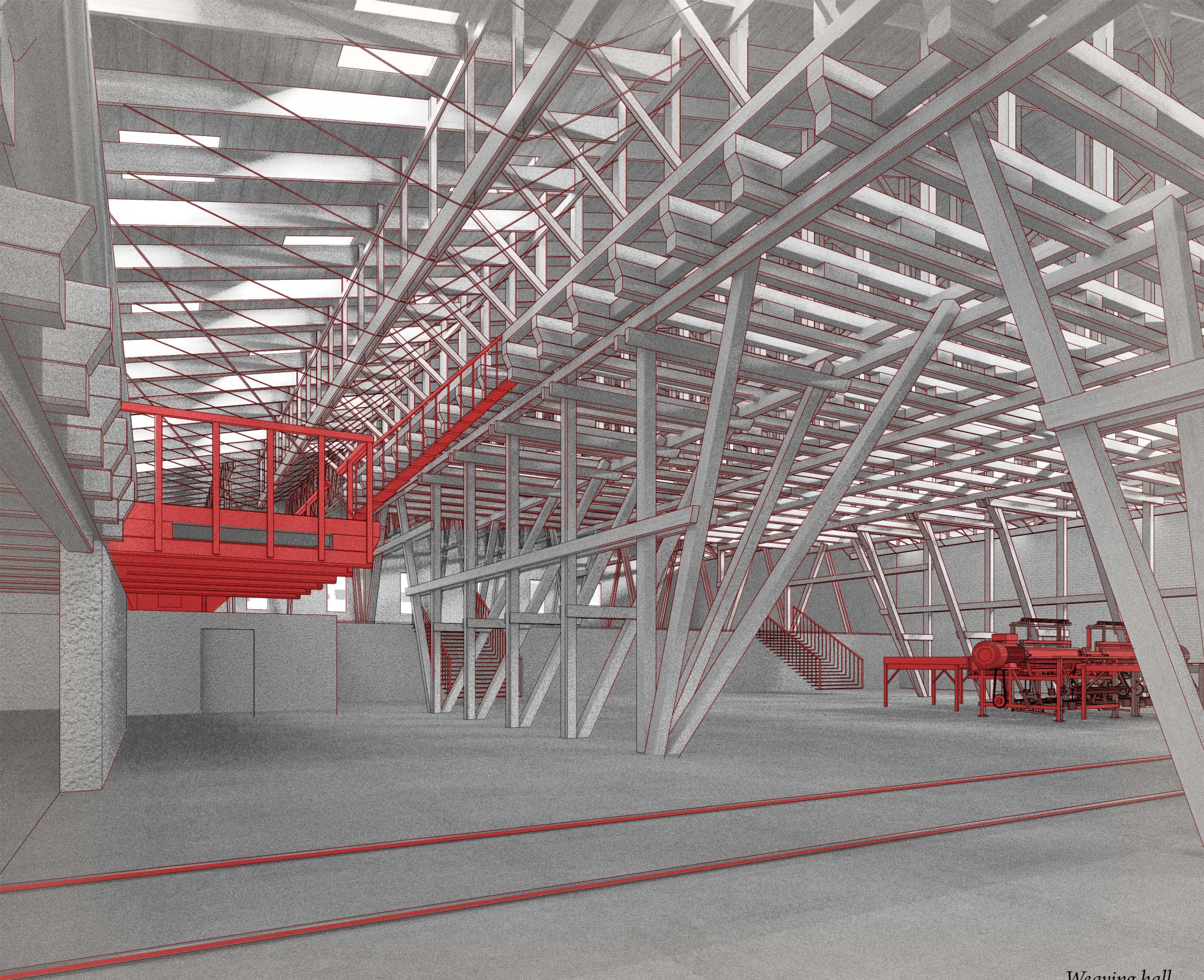
Weaving production

0 1 2,5 5m

Section CC 1:200



Production hall



Weaving hall

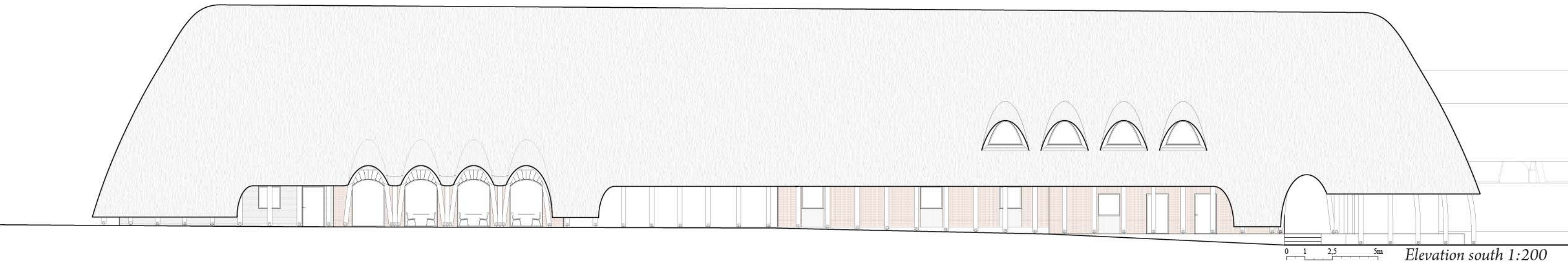


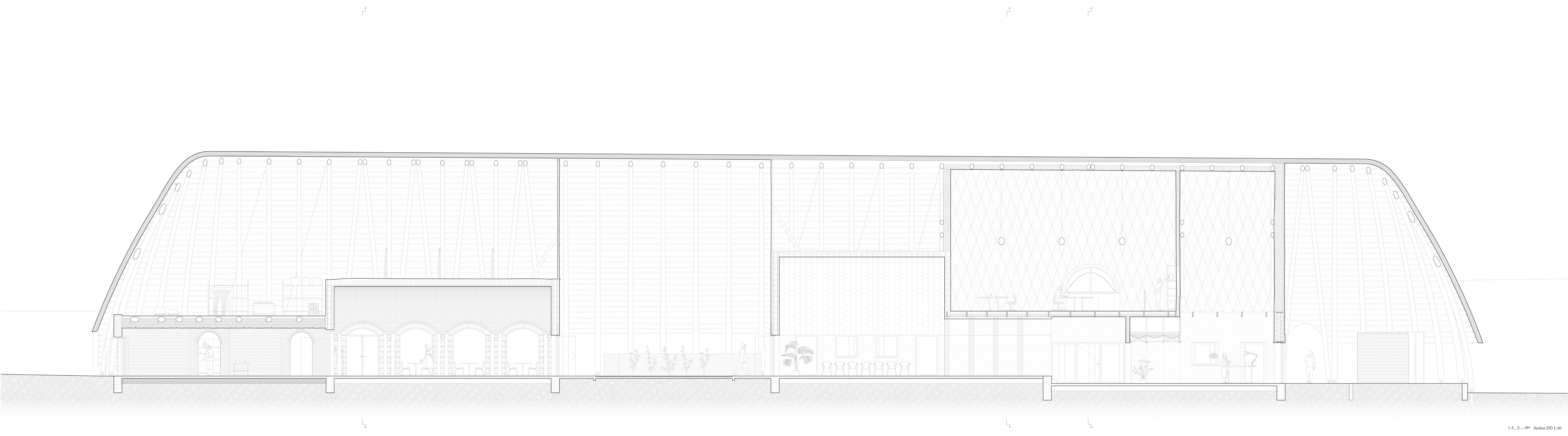
Exterior view

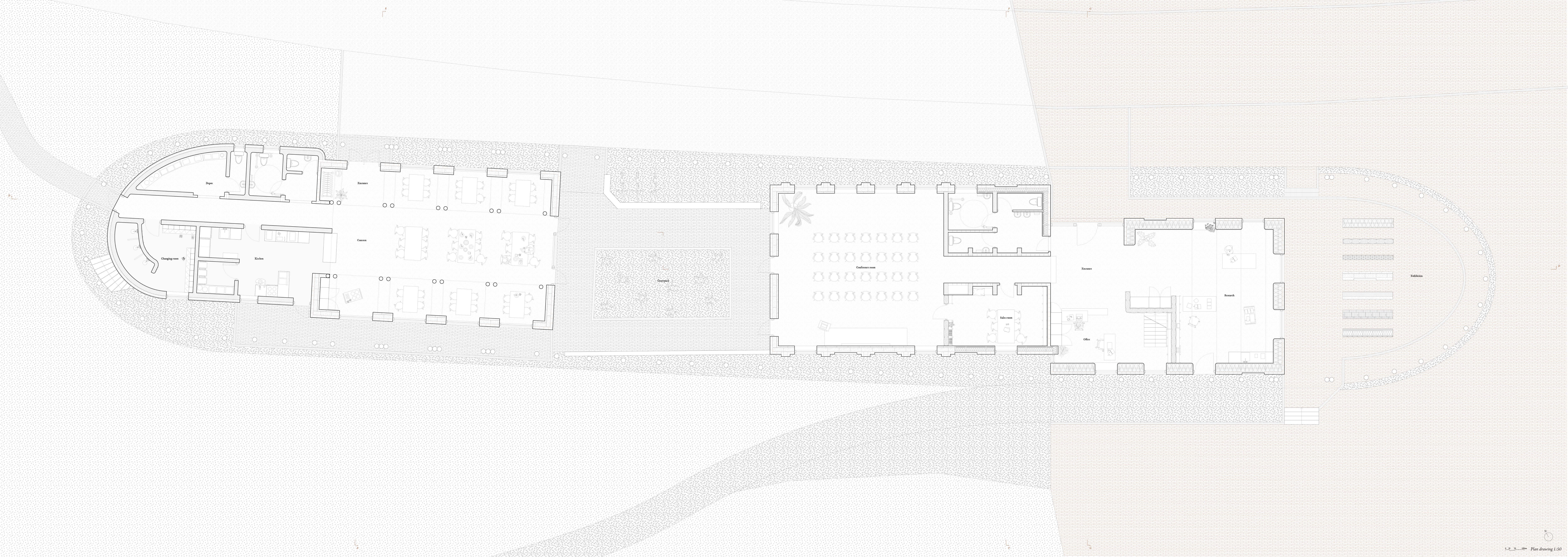


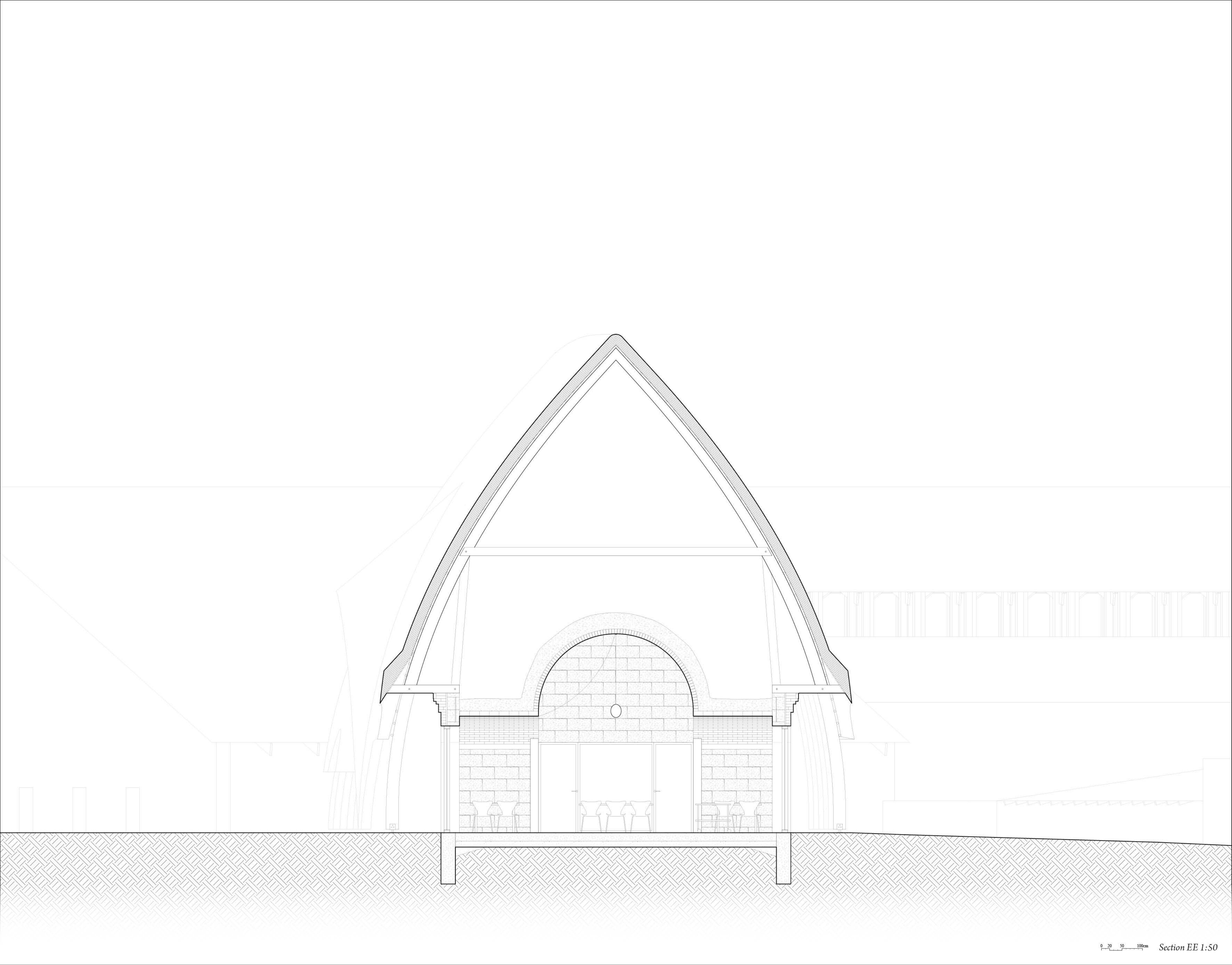
0 1 2,5 5m

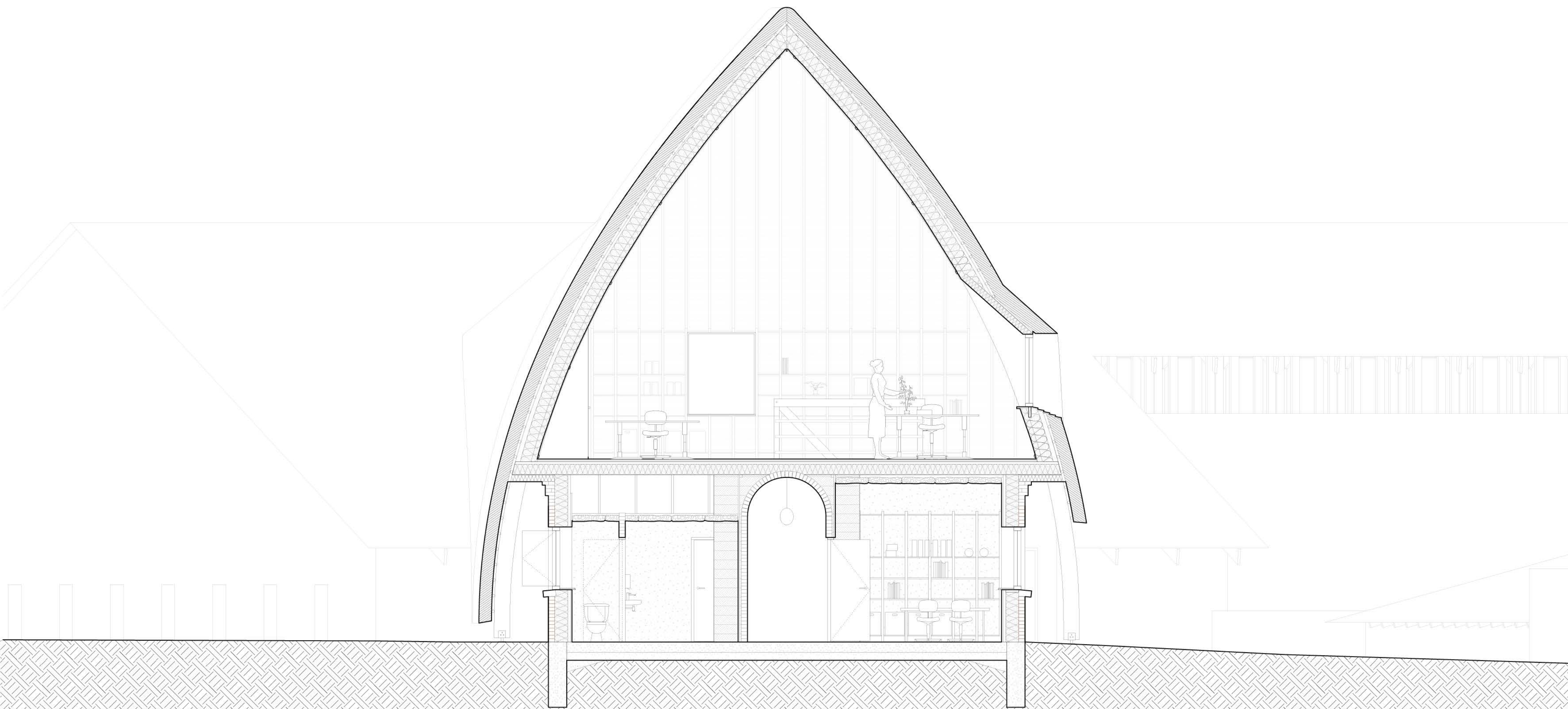
Elevation north 1:200

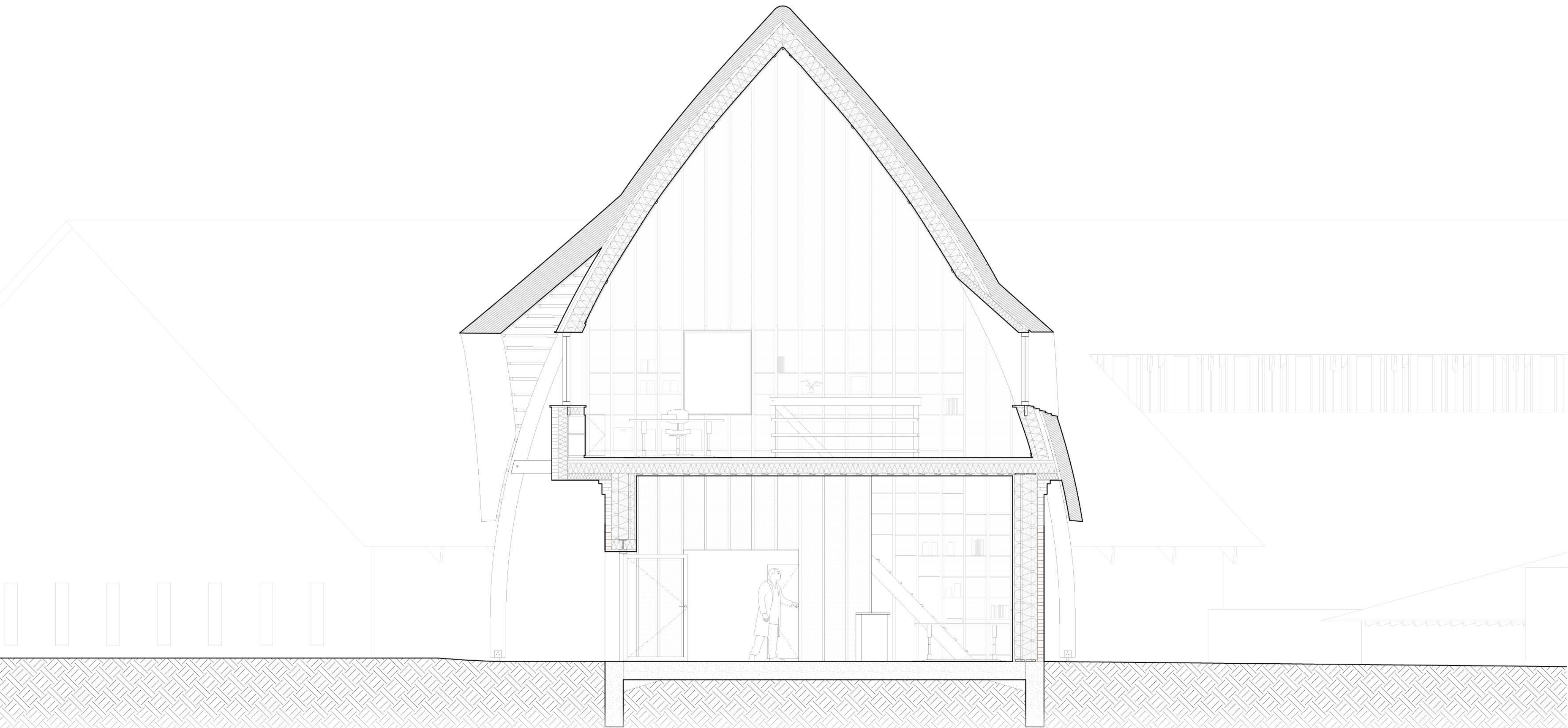








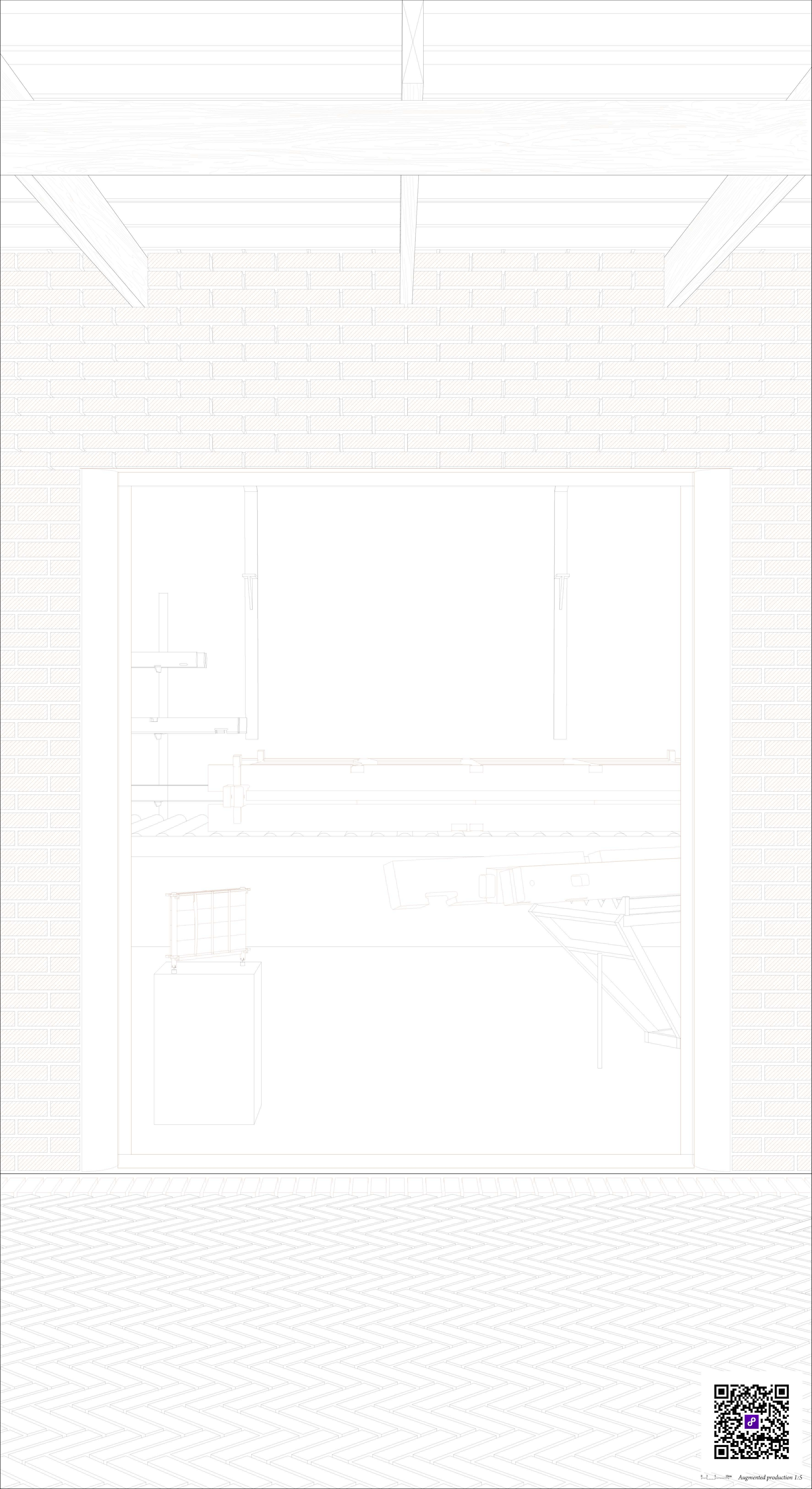


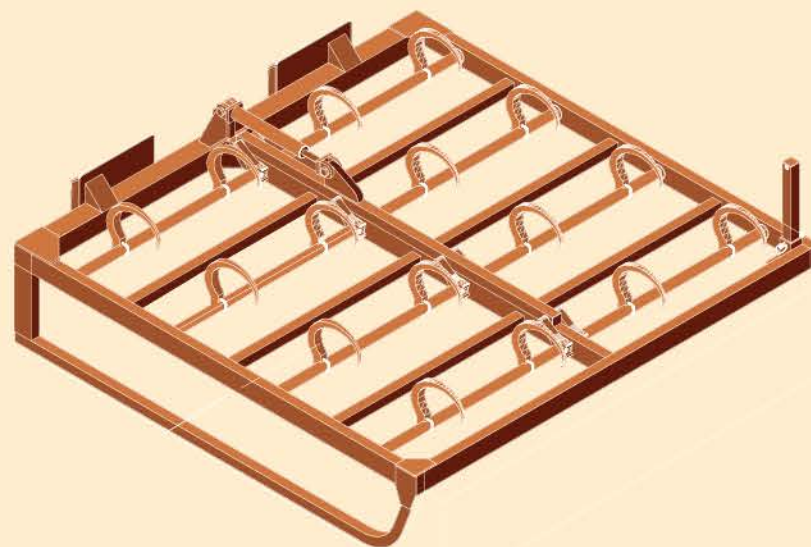
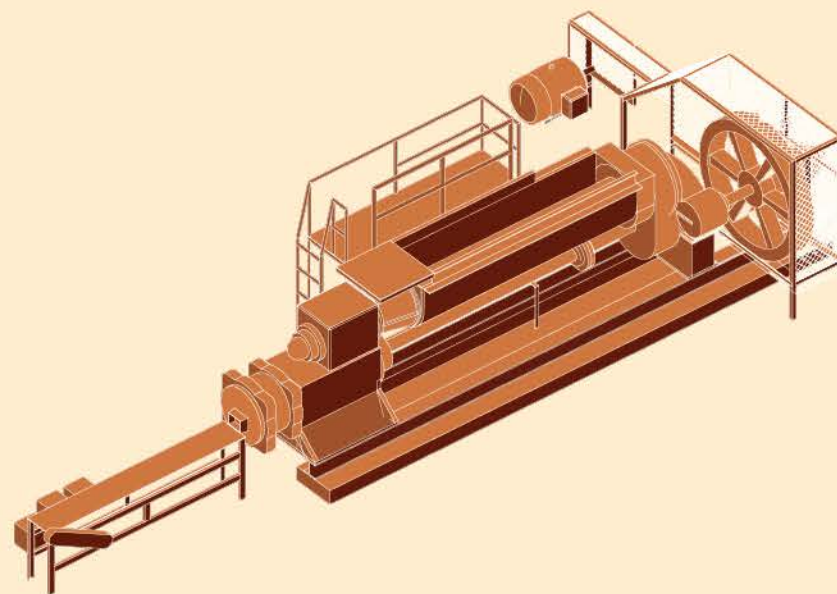
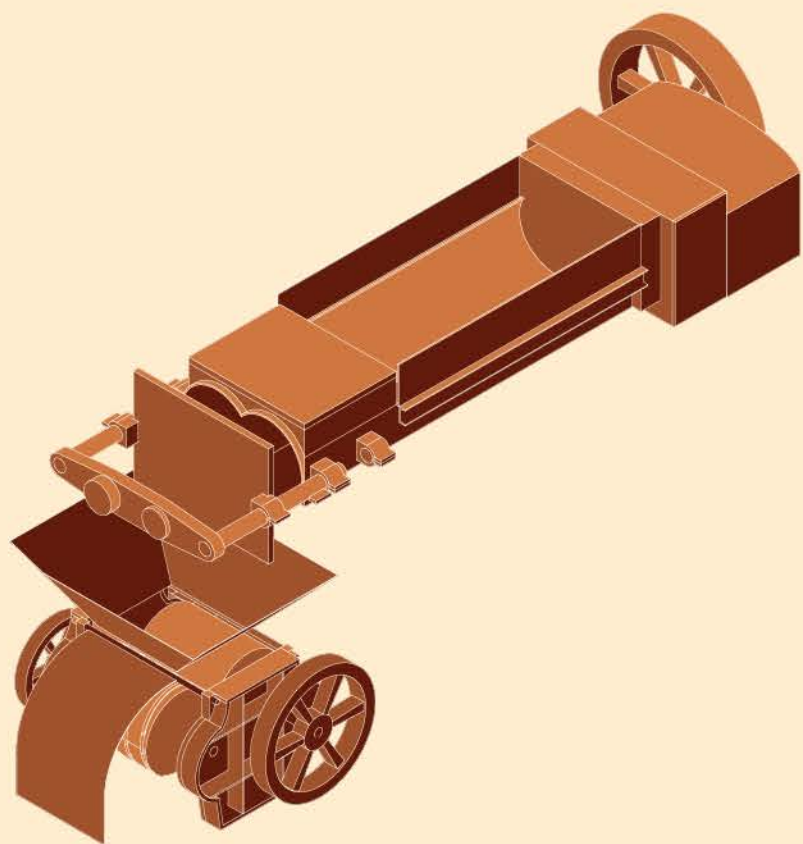
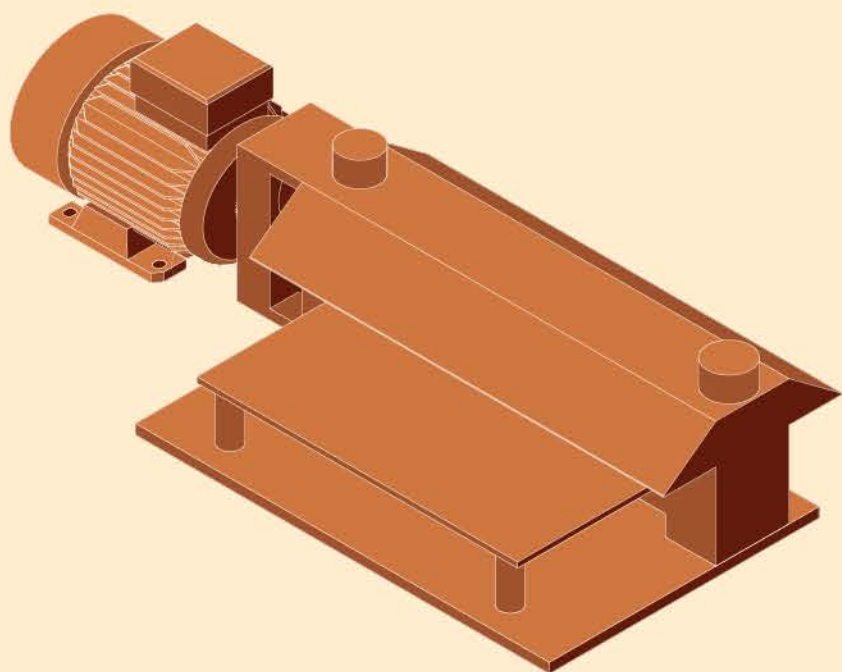


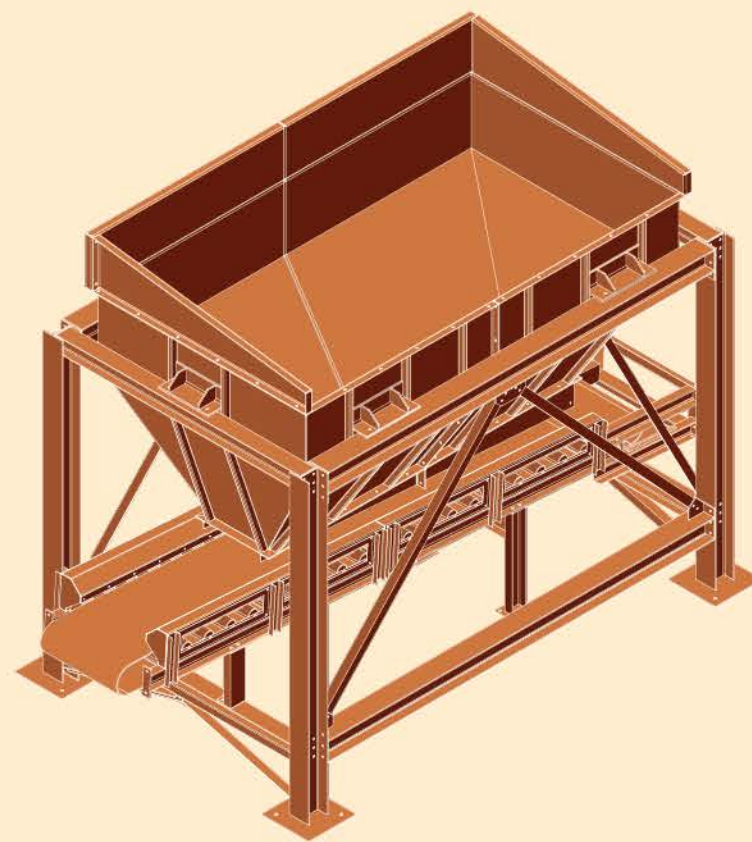
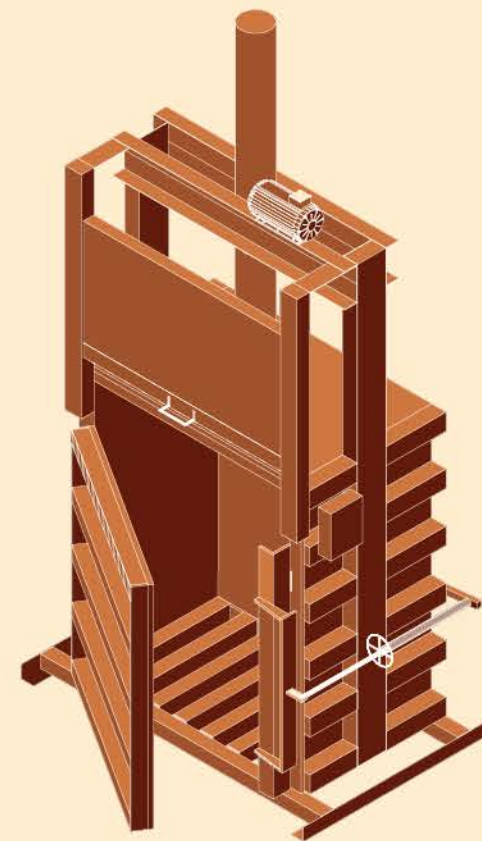
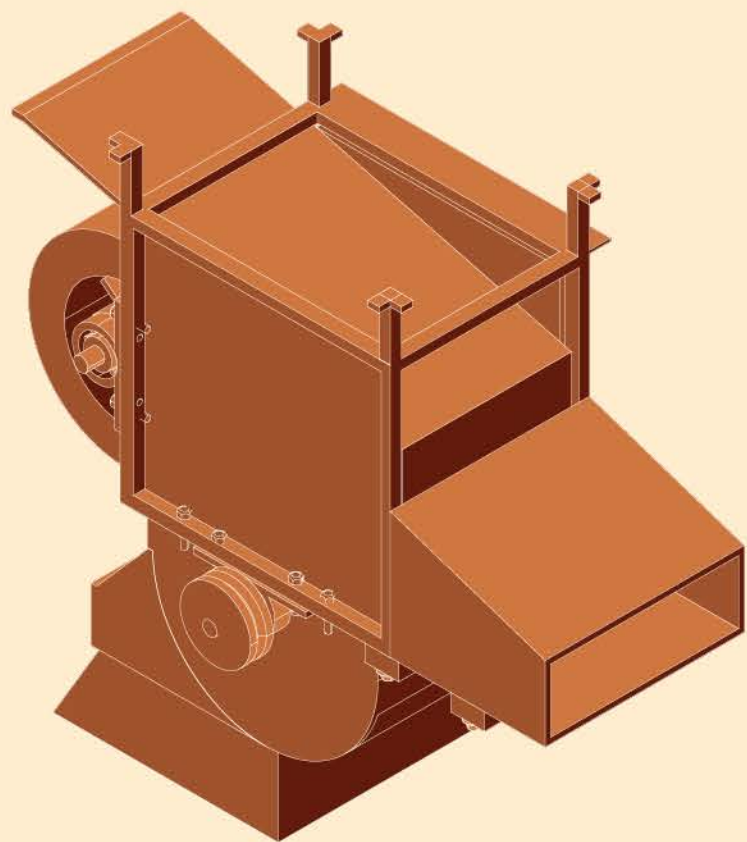
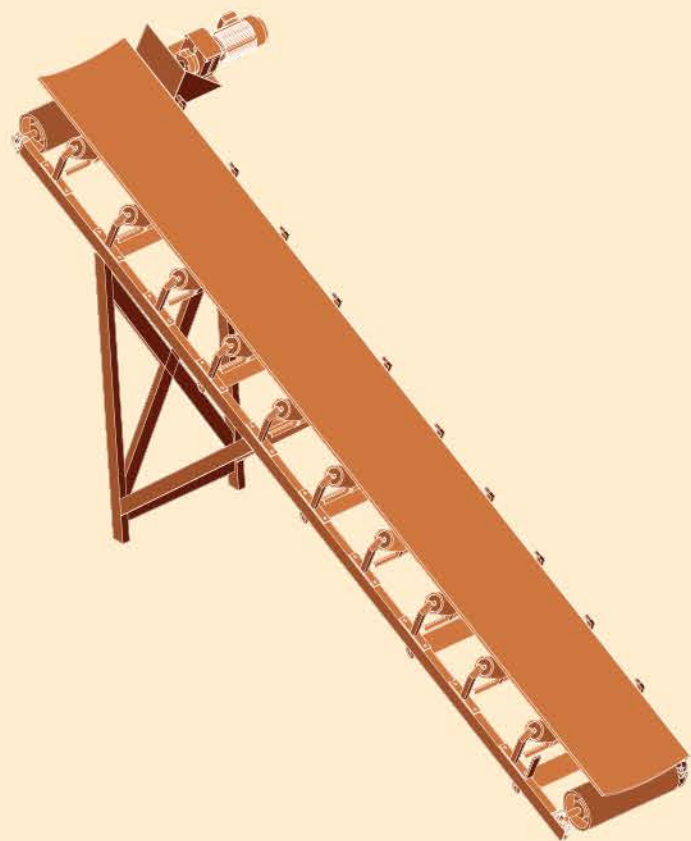


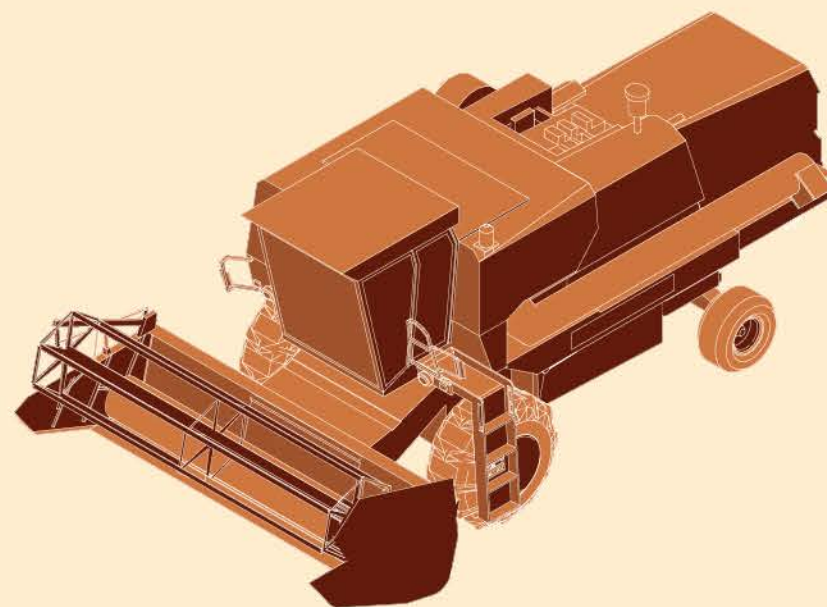
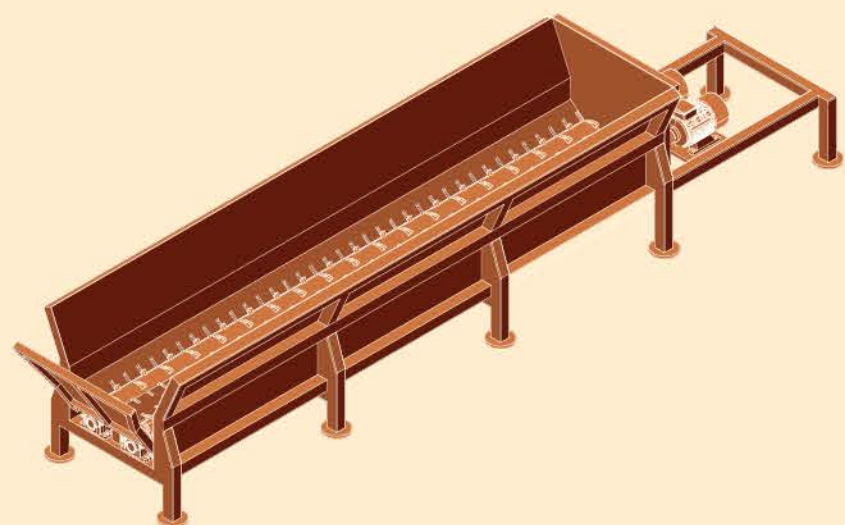
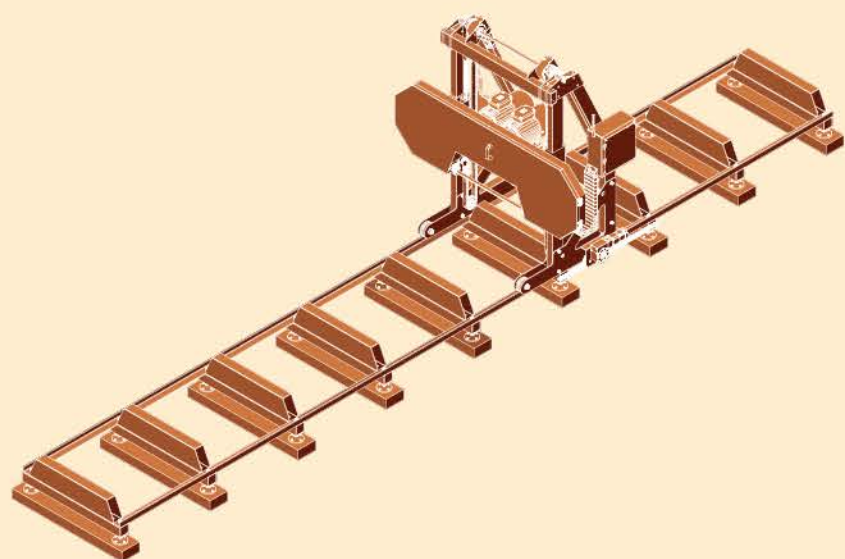
Canteen interior

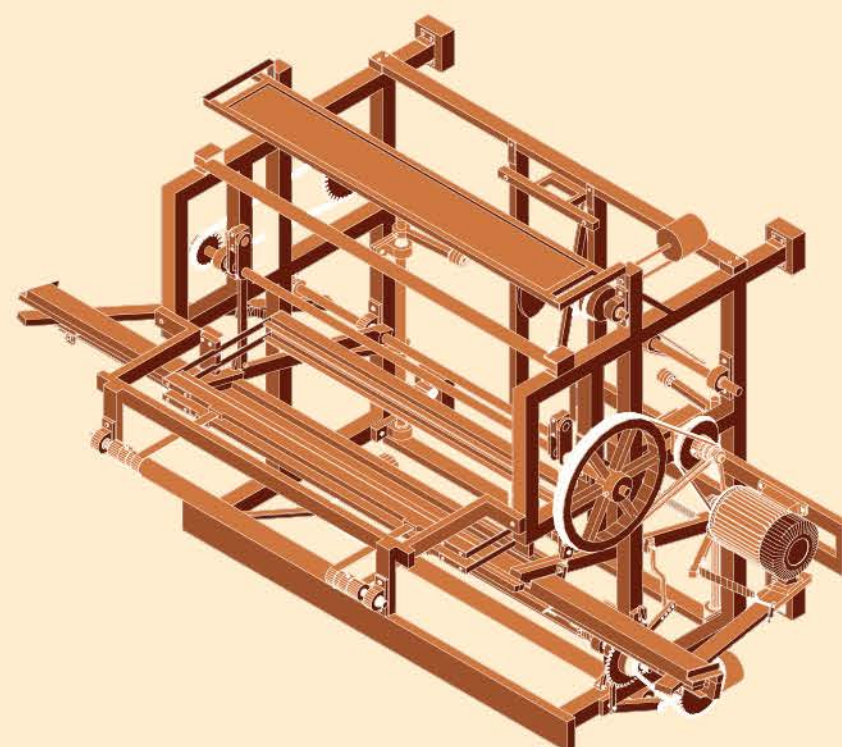
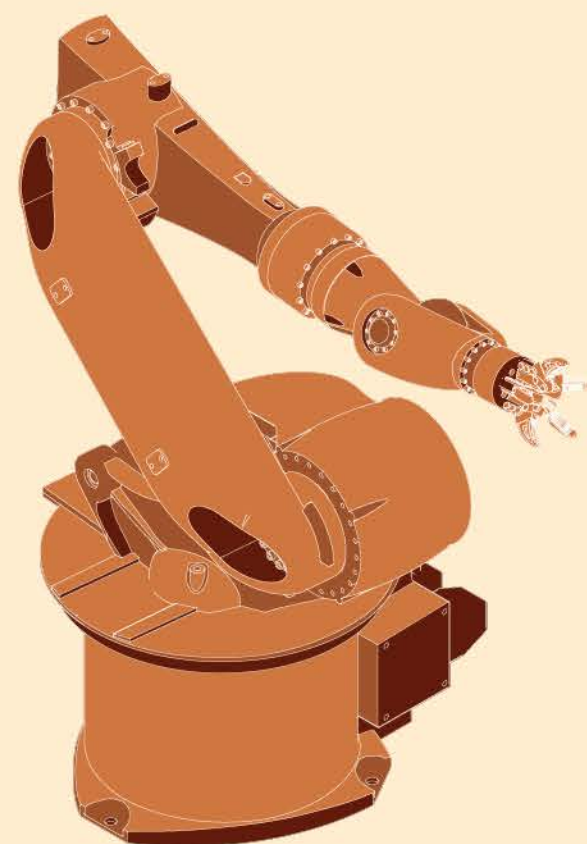
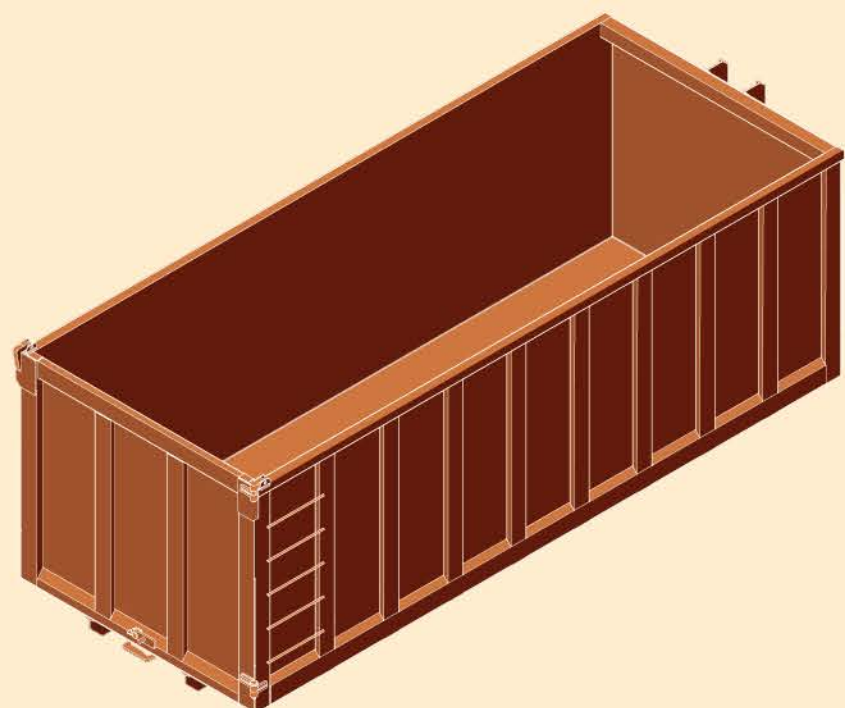
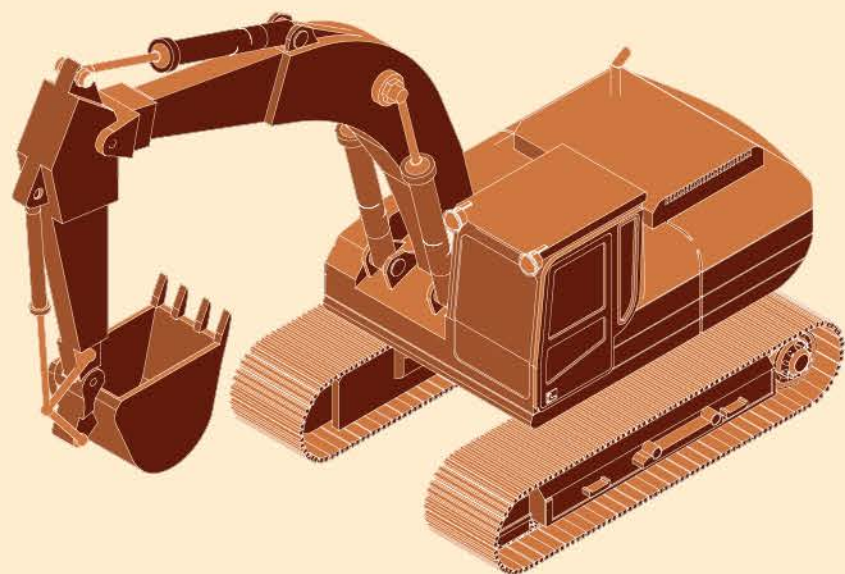












Model photos

Proposal by
Mikkel Frisbæk Sørensen

“The Elite Performance”

Thesis for
Master of Arts in Architecture RIBA Part II

Aarhus School of Architecture AAA,
Fall of 2022

Supervised by
Dan Ljungar

17 January 2022.



-Tree
-Ten
-Stere
-Tectonic
-Ceramic

